

# XVI

ENHANCED CVI



XVI-40VDF-IR28

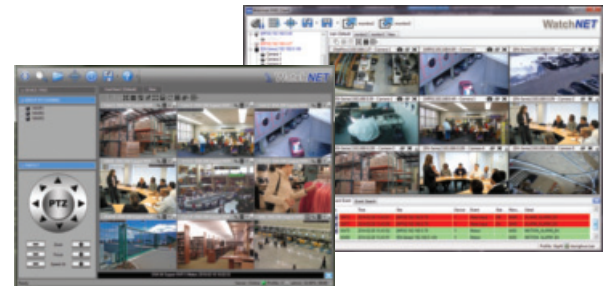


### 4MP HD Dome Camera

- ❖ 1/3" 4MP HD CMOS image sensor
- ❖ Max 30fps@4MP
- ❖ Three Axis
- ❖ HD and SD output switchable
- ❖ D-WDR, Day/Night (ICR), DNR 3D, AGC, BLC
- ❖ 2.8mm fixed lens
- ❖ Max. IR length 30m/98feet, Smart IR
- ❖ IP67, IK10, DC12V
- ❖ OSD Menu, control over coaxial cable
- ❖ CVI Compatible Camera



### 4MP HD Dome Camera



FREE Multisite VMS Software  
Download from [www.watchnetinc.com](http://www.watchnetinc.com)



iPhone



Optional Brackets:



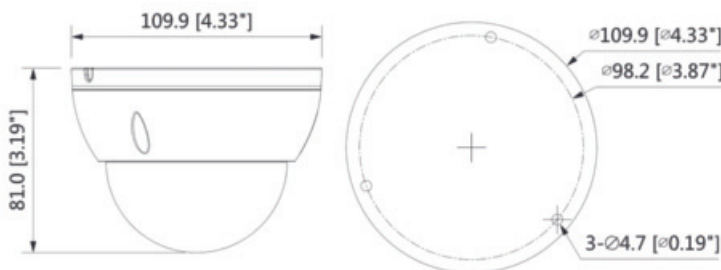
BRACK-WM-48



BRACK-BB-44



BRACK-PM-06



Model	XVI-40VDF-IR28
<b>Camera</b>	
Image Sensor	1/3" 4Megapixel progressive CMOS
Effective Pixels	2688(H) x 1520(V)
Mini. Illumination	0.03Lux/F2.0, 30IRE, 0Lux IR on
S/N Ratio	More than 65dB
Electronic Shutter Speed	PAL: 1/25~1/100000s / NTSC: 1/30~1/100000s
IR Distance	30m/98feet
Scanning System	Progressive
IR On / Off Control	Auto / Manual
IR LEDs	12
<b>Lens</b>	
Lens Type	Fixed lens
Focal Length	2.8mm
Max. Aperture	F2.0
Angle of View	H: 84.8° (99.7°/52.5°)
Mount Type	Board-in Type
Close Focus Distance	1100mm (800mm/2200mm) / 43.3" (31.5"/86.6")
<b>Video</b>	
Resolution	4MP (2560×1440)
Frame Rate	25/30fps@4MP, 25/30fps@1080P, 25/30fps@720P
Video Output	1-channel BNC high definition video output / CVBS video output (Can switch)
Day/Night	Auto (ICR) / Manual
OSD Menu	Multi-language
BLC Mode	BLC / HLC / D-WDR
Gain Control	AGC
Noise Reduction	2D
White Balance	Auto / Manual
Smart IR	Auto / Manual

<b>Interface</b>	
Audio Interface	N/A
<b>Electrical</b>	
Power Supply	12V DC ±25%
Power Consumption	Max 3.6W (12V DC, IR on)
<b>Environmental</b>	
Operating Conditions	-40°C ~ +60°C (-40°F ~ +140°F) / Less than 90% RH * Start up should be done at above -40°C (-40°F)
Storage Conditions	-40°C ~ +60°C (-40°F ~ +140°F) Less than 90% RH
Protection Level	Ingress Protection – IP67 & IK10
<b>Construction</b>	
Casing	Aluminium
Dimensions	Φ109.9mm × 81.0mm (Φ4.33" × 3.19")
Net Weight	0.21kg (0.46lb)
Gross Weight	0.31kg (0.68lb)

All logos & trade marks represent the registered users only. All rights reserved.  
All product specifications on this brochure are subject to change without notice.

**CANADA:**  
351 Ferrier Street, Unit 5  
Markham, ON L3R 5Z2  
Toll Free: 1-866-843-6865  
Tel: 416-410-6865  
Fax: 1-866-331-3341

**USA:**  
171 Cooper Ave. Suite 110  
Tonawanda, NY 14150 USA  
Toll Free: 1-855-404-3193  
Local: 1-716-877-7277  
Fax: 1-866-331-3341

Rev April 24, 2019  
[info@watchnetinc.com](mailto:info@watchnetinc.com)  
[www.watchnetinc.com](http://www.watchnetinc.com)

**INDIA:**  
RZ- 2, Ground Floor  
Kapashera  
Opp Kapashera Police Station  
New Delhi-110037  
Tel/Fax: +91 11 26816005

**UAE:**  
P O Box No 126312  
Office Suite 703  
Oxford Towers, Business Bay  
Dubai, UAE  
Tel: + 971 4 2767117