

WatchNET®

Security Since 2000

XVi DVR

Penta-Brid*
Recorder

XVI

ENHANCED CVI
HD over UTP / Coax



EVI-3221EX

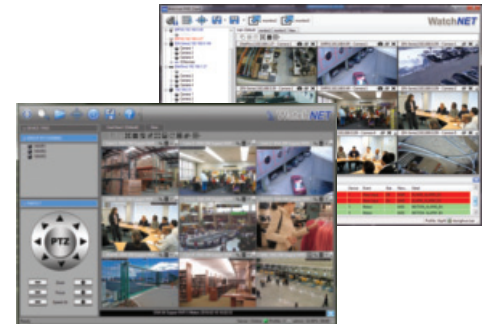


Features:

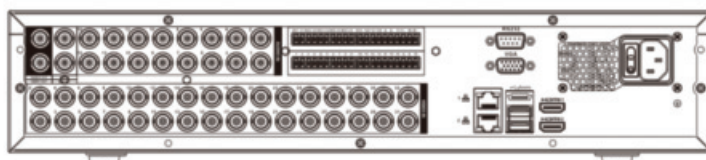
- ❖ 2U Standalone DVR, Embedded LINUX OS
- ❖ 32 Channel IP Camera input, each channel up to 5MP
- ❖ H.264+/H.264 dual-stream video compression
- ❖ Penta-Brid supports (HDCVI/XVI, TVI, AHD, CVBS, IP)*
- ❖ Support 8 SATA Ports, up to 8TB capacity for each disk
- ❖ Multiple network monitoring:
Web viewer, HD VMS & Mobile phone viewer
- ❖ Full HD over UTP or Coax cable
- ❖ 3D intelligent positioning with WatchNET
PTZ dome camera



32 CH 1080P
2U Digital Video Recorder
with 8HDD Bays



FREE Multisite VMS Software included



32 Channel PENTABRID 1080P Lite 2U Digital Video Recorder - EVI-3221EX

WatchNET's next generation PENTABRID Recorder offers unparalleled recording technology for IP video surveillance applications with 8 Hot-swap HDD Bays. As the perfect solution to upgrade existing video surveillance systems, EVI supports PENTABRID access technology such as XVI, HDCVI, AHD, TVI, CVBS and IP to effortlessly integrate with popular industry formats, offering an affordable solution loaded with flexible options. Designed as a full compatibility product, EVI is able to provide end user the simplicity of analog system, namely lower system cost, simple installation and use of existing cable.

This PENTABRID Recorder is ideal for a wide range of applications such as Public Safety, Railways, Government Institutions, Resorts, Malls, Transportation and Financial Institutions, where demand expansion flexibility, high reliability and centralized storage management.

PRODUCT FEATURES

H.264+ Smart Codec

H.264+ smart code can reduce up to 70% bit rate and storage requirements without having to invest in new cameras.

Auto-detect

XVI/HDCVI/ AHD/TVI/CVBS auto-detect feature can auto recognize the signal of front-camera without any setting. It makes operation more friendly and convenient.

High Resolution Support

The EVI recorder supports 5MP HD resolution (2560 x 1920) IPC input for both recording & live viewing.

Spot Out Monitor

EVI-3221EX recorder comes with built-in secondary monitor spot output feature. This allows the operator to view one special monitor that assigned to selected cameras or video inputs from higher security areas.

Spot Output

With built-in intelligent video analytics, the EVI recorder has the ability to detect and analyze moving objects for improved video surveillance.

The EVI recorder provides optional standard intelligence at the edge allowing detection of multiple object behaviors such as abandoned or missing objects. IVS also supports Line-detector tampering analytics, allowing the camera to detect when a pre-determined line has been crossed.

IVS Function (Intelligent Video System)

With built-in intelligent video analytics, the EVI recorder has the ability to detect and analyze moving objects for improved video surveillance. The EVI provides optional standard intelligence at the edge allowing detection of multiple object behaviors such as abandoned or missing objects. IVS also supports Tripwire analytics, allowing the camera to detect when a predetermined line has been crossed.

Face Detection

It is a type technology being used in a variety of applications that search or identify individuals which show front cameras.

Smart Search

Smart search helps to get motion detection video within short span of time through drawing a region when playback. It is used extensively during emergency / quick search.



Model	EVI-3221EX	
System	Main Processor	Embedded Processor
	Operating System	Embedded LINUX OS
Display	Interface	2 HDMI, 1 VGA, 1 TV
	Resolution	1920×1080, 1280×1024, 1280×720, 1024×768
	Multi-screen Display	1/4/8/9/16/25/36
	OSD	Camera title, Time, Video loss, Camera lock, Motion detection, Recording
Video Detection and Alarm	Trigger Events	Recording, PTZ, Tour, Alarm Out, Video Push, Email, FTP, Snapshot, Buzzer and Screen Tips
	Video Detection	Motion Detection, MD Zones: 396 (22 × 18), Video Loss, Tampering and Diagnosis
	Alarm input	16
	Relay Output	6
Playback and Backup	Playback	1/4/9/16
	Search Mode	Time /Date, Alarm, MD and Exact Search (accurate to second), Smart search
	Playback Function	Play, Pause, Stop, Rewind, Fast play, Slow Play, Next File, Previous File, Next Camera, Previous Camera, Full Screen, Repeat, Shuffle, Backup Selection, Digital Zoom
	Backup Mode	USB Device/Network
Storage	Internal HDD	8 SATA Ports, up to 8TB capacity for each disk
	eSata	1 Port
Auxiliary Interface	USB	4 USB Ports (2 USB 2.0 , 2 USB 3.0)
	RS232	1 port, for PC communication & Keyboard
	RS485	1 Port, for PTZ Control
	RS422	1 Port, for PTZ Control
	HD CVI Camera Input	32 Channel
Audio and Video	IP Camera Input	32 Channel, each channel up to 5MP
	Audio In/Out	16 Audio In, 1 Audio Out, BNC
	Two-way Talk	1 Mic In, 1 Mic Out, BNC
	Compression	H.264+ / H.264
Recording	Resolution	1080P, 720P, 960H, D1, HD1, BCIF, CIF, QCIF
	Record Rate	Main stream: 1080P(1~15fps) 1080N/720P/960H/D1/HD1/BCIF/CIF/QCIF (1~25/30fps) Sub stream: D1/CIF/QCIF(1~15fps)
	Bit Rate	1Kbps ~ 6144Kbps Per Channel
	Record Mode	Manual, Schedule (Regular, Continuous), MD (Video detection: Motion Detection, Video Loss, Tampering), Alarm, Stop
	Record Interval	1 ~ 60 min (default: 60 min), Pre-record: 1 ~ 30 sec, Post-record: 10 ~ 300 sec
	Interface	2 RJ-45 Port (1000M)
Network	Network Function	HTTP, TCP/IP, IPv4/IPv6, UPnP, RTSP, UDP, SMTP, NTP, DHCP, DNS, IP Filter, PPPoE, DDNS, FTP, Alarm Server, IP Search (Support WatchNET IP camera, DVR, NVS, etc.)
	Max. User Access	128 users
	Interoperability	ONVIF 2.4.1, CGI Conformant
	Power Supply	AC100V-240V, 50/60Hz
Electrical	Power Consumption	<35W (Without HDD)
	Operating Conditions	-10°C ~ +55°C (+14°F ~ +131°F), 86 ~ 106kpa
General	Storage Conditions	0°C ~ +50°C (+32°F ~ +122°F), 0 ~ 90% RH
	Dimensions	2U, 440mm x 455mm x 95mm (17.3" x 17.9" x 3.7")
	Net/Gross Weight	6.5kg (14.32lb) (without HDD) / 9.8kg (21.6lb)
	Installation	Desktop installation / Rack-mounted

* All product names, logos and brands are property of their respective owners. All company products and service names used on this box/website/brochure are for identification purposes only. Use of these names, logos and brands does not imply endorsement. 2017 WatchNET Inc. © All Rights Reserved All product specifications are subject to change without notice.

CANADA:
351 Ferrier Street, Unit 5
Markham, ON L3R 5Z2
Toll Free: 1-866-843-6865
Tel: 416-410-6865
Fax: 1-866-331-3341

USA:
171 Cooper Ave. Suite 110
Tonawanda, NY 14150 USA
Toll Free: 1-855-404-3193
Local: 1-716-877-7277
Fax: 1-866-331-3341

info@watchnetinc.com
www.watchnetinc.com

INDIA:
RZ- 2, Ground Floor
Kapashera
Opp Kapashera Police Station
New Delhi-110037
Tel/Fax: + 91 11 26816005

UAE:
P O Box 126312
No 703, Oxford Towers
Business Bay
Dubai, UAE
Tel: + 971 4 2767117