

## Full HD Water-Proof & Vandal-Proof Network Motorized IR Dome Camera



MPIX-13VDV-IRV  
MPIX-21VDV-IRV  
MPIX-30VDV-IRV



## Full HD IR Water & Vandal Proof Network Motorized Dome Camera



### Features:

- ❖ 1/3" 1.3, 2.1, 3.0 Megapixel image sensor
- ❖ H.264 & MJPEG dual-stream encoding
- ❖ D-WDR, Day/Night(ICR), 3DNR, AWB, AGC, BLC
- ❖ 2.7 ~ 12mm varifocal motorized lens
- ❖ Max IR LEDs Length 30m
- ❖ IP66, IK10, PoE, Vandal-proof, Water-proof
- ❖ Multiple network monitoring:  
Built-in web server & Multifunction VMS
- ❖ Smart phones compatible



Professional 64 CH NetFLOW LT  
FREE Software included

**Model MPIX-13VDV-IRV**  
1.3M/720P(1 ~ 25/30fps)  
Resolution: 1.3M (1280x960)/720P(1280x720)

**Model MPIX-21VDV-IRV**  
2.1M 1080P/720P(1 ~ 25/30fps)  
Resolution: 2.1M 1080P(1920x1080)

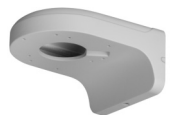
**Model MPIX-30VDV-IRV**  
3.0M(1 ~ 20fps)/1080P (1 ~ 25/30fps)  
Resolution: 3.0M (2048x1536)/1080P(1920x1080)



BRACK-CMT-34

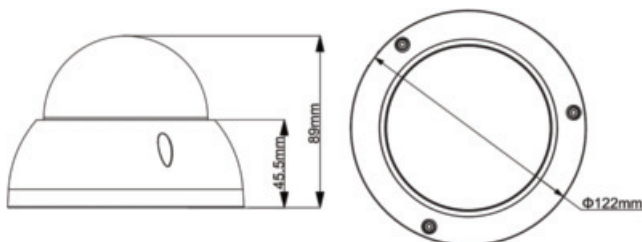


BRACK-BB-48



BRACK-WM-48

### Optional Brackets:



iPhone



Model	MPIX-13VDV-IRV	MPIX-21VDV-IRV	MPIX-30VDV-IRV
<b>Camera</b>			
Motorized variable focus			
Image Sensor	1/3" 1.3 Megapixel progressive scan	1/3" 2.1 Megapixel progressive scan	1/3" 3.0 Megapixel progressive scan
Effective Pixels	1355(H) x 977(V)	1984(H) x 1121(V)	2304(H) x 1536(V)
Mini. Illumination	0.01Lux/F1.4(Color); 0Lux/F1.4(IR on)		
Electronic Shutter Speed	Auto/Manual, 1/3(4)~1/10000s		
S/N Ratio	More than 50dB		
<b>Lens</b>			
Max Aperture	F1.4		
Focal Length	2.7mm ~ 12mm		
Focus Control	Auto		
Lens Type	Motorized/Fixed Iris		
Mount Type	Board-in Type		
Angle of View	H: 92° ~ 28°	H: 98° ~ 30°	H: 92° ~ 28°
<b>Features</b>			
Day/Night	Auto(ICR)/Color/B/W		
Backlight Compensation	BLC / HLC / DWDR		
IR LEDs Length	Max 30m		
White Balance	Auto/Manual		
Gain Control	Auto/Manual		
Noise Reduction	3D		
Privacy Masking	Up to 4 areas		
<b>Video</b>			
Video Compression	H.264/ H.264H/ MJPEG		
Resolution	1.3M (1280×960)/720P(1280×720) D1(704×576/704×480) CIF(352×288/352×240)	2.1M 1080P(1920×1080) 1.3M(1280×960)/720P(1280×720) D1(704×576/704×480)/CIF(352×288/352×240)	3.0M (2304×1296) (2048×1536)/1080P(1920×1080) 1.3M(1280×960)/720P(1280×720) D1(704×576/704×480)/CIF(352×288/352×240)
Frame Rate	Main Stream: 1.3M/720P(1 ~ 25/30fps) Sub Stream: D1/CIF(1 ~ 25/30fps)	Main Stream: 2.1M 1080P/720P(1 ~ 25/30fps) Sub Stream: D1/CIF(1 ~ 25/30fps)	Main Stream: 3.0M(1 ~ 20fps)/1080P (1 ~ 25/30fps) Sub Stream: D1/CIF(1 ~ 25/30fps)
Bit Rate	H.264H: 40K ~ 8192Kbps; MJPEG: 40K~16384Kbps		
<b>Network</b>			
Ethernet	RJ-45 (10/100Base-T)		
Protocol	IPv4/IPv6, HTTP, HTTPS, SSL, TCP/IP, UDP, UPnP, ICMP, IGMP, SNMP, RTSP, RTP, SMTP, NTP, DHCP, DNS, PPPoE, DDNS, FTP, IP Filter, QoS, Bonjour		
Max. User Access	20 users		
Compatibility	ONVIF Profile S		
<b>Environmental</b>			
Power Supply/Consumption	DC12V, PoE (802.3af) / Max 8.5W	DC12V, PoE (802.3af) / Max 8.5W	DC12V, PoE (802.3af) / <8.5W
OperatingTemp./Hum.	-30°C~+60°C /-22°F~+140°F, 20% ~ 85% RH		
Protection Level	IP66, POE, IK10		
Dimension	φ122mm × 89mm / 4.8" × 3.5"		
Weight	0.5kg / 1.10lb		

All logos & trade marks represent the registered users only. All rights reserved.  
All product specifications on this brochure are subject to change without notice.

**CANADA:**  
351 Ferrier Street, Unit 5  
Markham, ON L3R 5Z2  
Toll Free: 1-866-843-6865  
Tel: 416-410-6865  
Fax: 1-866-331-3341

**USA:**  
171 Cooper Ave. Suite 110  
Tonawanda, NY 14150 USA  
Toll Free: 1-855-404-3193  
Local: 1-716-877-7277  
Fax: 1-866-331-3341

[info@watchnetinc.com](mailto:info@watchnetinc.com)  
[www.watchnetinc.com](http://www.watchnetinc.com)

**INDIA:**  
RZ- 2, Ground Floor, Kapashera  
Opp Kapashera  
Police Station  
New Delhi-110037  
Tel/Fax: +91 11 25060481

**UAE:**  
P O Box 126312  
No 703, Oxford Towers  
Business Bay  
Dubai, UAE  
Tel: +971 4 2767117