



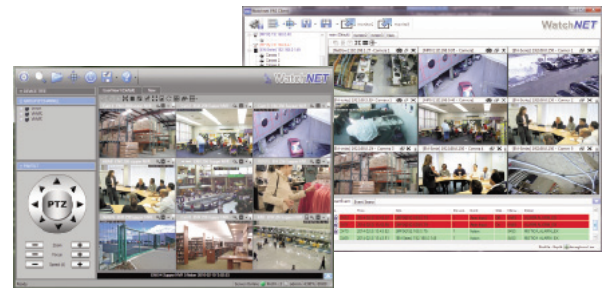
MPIX-80IRBVTR2

## 8MP Lite IR Vari-focal Turret Network Camera



### Features:

- 8MP, 1/2.7" CMOS image sensor, low illuminance, high image definition
- Output max. 8MP (3840 × 2160) @15 fps, and supports (2688 × 1520) @25/30 fps
- H.265 codec, high compression ration, ultra-low bit rate
- Built-in IR LED, max. IR distance: 40m/131ft
- Rotation mode, WDR, 3D DNR, HLC, BLC, digital watermarking, applicable to various monitoring scenes
- Abnormality detection: Motion detection, video tempering, scene changing, no SD card, SD card full, SD card error, network disconnection, IP conflict, illegal access, voltage detection
- Supports max. 256 GB Micro SD card
- 12V DC/POE power support
- IP67 protection
- **Supports multiple analytic functions**



FREE Multisite VMS Software  
Download it from [www.watchnetinc.com](http://www.watchnetinc.com)



Optional Brackets:



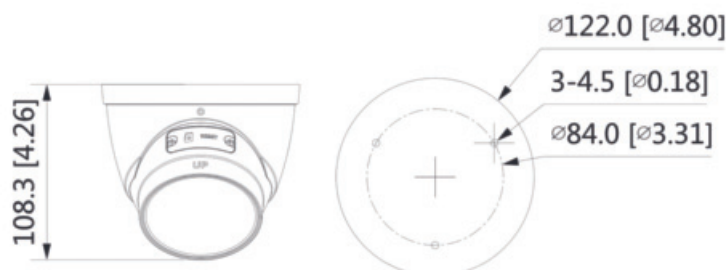
BRACK-BB-48



BRACK-WM-48



BRACK-PM-06



| Model                    | MPIX-80IRBVTR2   |
|--------------------------|--|
| <b>Camera</b>            |  |
| Image Sensor             | 1/2.7" 8Megapixel progressive CMOS   |
| Effective Pixels         | 3840 (H) × 2160 (V)  |
| RAM/ROM                  | 128 MB / 256 MB  |
| Min. Illumination        | 0.008 Lux@F1.5   |
| Electronic Shutter Speed | Auto/Manual 1/3 s~1/100000 s   |
| IR Distance              | 40m (131ft)  |
| IR On/Off Control        | Auto/Manual  |
| IR LEDs Number           | 2 (IR LEDs)  |
| <b>Lens</b>              |  |
| Lens Type                | Motorized vari-focal   |
| Focal Length             | 2.7 mm~13.5 mm   |
| Mount Type               | φ14  |
| Angle of View            | Pan: 113°~31°Tilt: 58°~17°Diagonal: 138°~36  |
| Close Focus Distance     | 0.8 m (2.62 ft)  |
| Max. Aperture            | F1.5   |
| <b>Video</b>             |  |
| Compression              | H.265; H.264; H.264B; MJPEG  |
| Smart Codec              | Yes  |
| Resolution               | 2688 × 1520 (2688 × 1520); 2560 × 1440 (2560 × 1440); 2304 × 1296 (2304 × 1296); 1080p (1920 × 1080); 1.3M (1280 × 960); 720p (1280 × 720); D1 (704 × 576/704 × 480); VGA (640 × 480); CIF (352 × 288/352 × 240) |
| Frame Rate               | <b>Main Stream:</b> 3840 × 2160 (1 fps~15 fps)<br>2688 × 1520 (1 fps~25/30 fps)<br><b>Sub Stream:</b> 704 × 576 (1 fps~25 fps)<br>704 × 480 (1 fps~30 fps)   |
| Bit Rate Control         | CBR/VBR  |
| Bit Rate                 | H.264: 32 Kbps~8192 KbpsH.265: 12 Kbps~8192 Kbps   |
| Day/Night                | Auto(ICR) / Color / B/W  |
| BLC Mode                 | BLC / HLC / WDR(120dB)   |
| White Balance            | Auto/Natural/Street Lamp/Outdoor/Manual  |
| Gain Control             | Auto/Manual  |
| Noise Reduction          | 3D DNR   |
| Motion Detection         | Off / On (4 Zone, Rectangle)   |
| Region of Interest       | Off / On (4 Zone)  |
| Smart IR                 | Yes  |
| Flip                     | 0°/90°/180°/270°<br>(Support 90°/270° with 1920 × 1080 resolution)   |
| Mirror                   | Yes  |
| Privacy Masking          | Off / On (4 Area, Rectangle)   |

|                      |  |
|----------------------|--|
| <b>Smart Event</b>   |  |
| Standard Analytics   | Line Crossing, Intrusion   |
| <b>Network</b>       |  |
| Ethernet             | RJ-45 (10/100 Base-T)  |
| Protocol             | IPv4; IPv6; HTTP; HTTPS; TCP; UDP; ARP; RTP ; RTSP; RTCP; RTMP; SMTP; FTP; SFTP; DHCP; DNS; DDNS; QoS; UPnP; NTP; Multicast; ICMP; IGMP; NFS; PPPoE; 802.1x; Bonjour |
| Interoperability     | ONVIF(Profile S/Profile G/Profile T); P2P  |
| Streaming Method     | Unicast / Multicast  |
| Max. User Access     | 20   |
| Edge Storage         | FTP; SFTP; Micro SD Card (support max. 256GB); WatchNET Cloud; NAS   |
| <b>Electrical</b>    |  |
| Power supply         | 12V DC/PoE (802.3af)   |
| Power Consumption    | <7.6W  |
| <b>Environmental</b> |  |
| Operating Conditions | -30°C ~ +60°C (-22°F ~ +140°F) / less than≤95%   |
| Storage Conditions   | -40°C ~ +60°C (-40°F ~ +140°F)   |
| Ingress protection   | IP67   |
| <b>Construction</b>  |  |
| Casing               | Metal  |
| Dimensions           | 108.3 mm × Φ122 mm (4.26" × Φ1.80")  |
| Net Weight           | 0.69 kg (1.52 lb)  |
| Gross Weight         | 0.88 kg (1.94 lb)  |

\* All product names, logos and brands are property of their respective owners. All company products and service names used on this box/website/brochure are for identification purposes only. Use of these names, logos and brands does not imply endorsement. 2019 WatchNET Inc. © All Rights Reserved. All product specifications are subject to change without notice.

**CANADA:**  
351 Ferrier Street, Unit 5  
Markham, ON L3R 5Z2  
Toll Free: 1-866-843-6865  
Tel: 416-410-6865

**USA:**  
171 Cooper Ave. Suite 110  
Tonawanda, NY 14150 USA  
Toll Free: 1-866-843-6865  
Local: 1-716-877-7277

**UAE:**  
PO Box 126312  
No 703, Oxford Towers  
Business Bay, Dubai, UAE  
Tel: +971 4 2767117

Nov. 13, 2019

info@watchnetinc.com  
www.watchnetinc.com