



# 4K



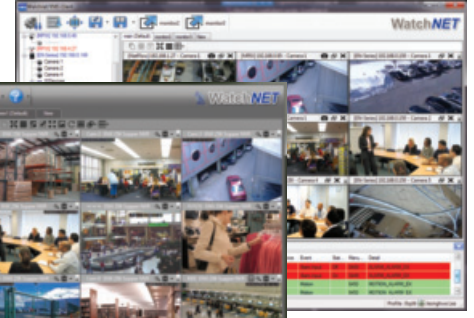
PNT-16EXAI-0T (NO HDD)

### 16 Channel Penta-brid 4K 2U Digital Video Recorder



#### Features:

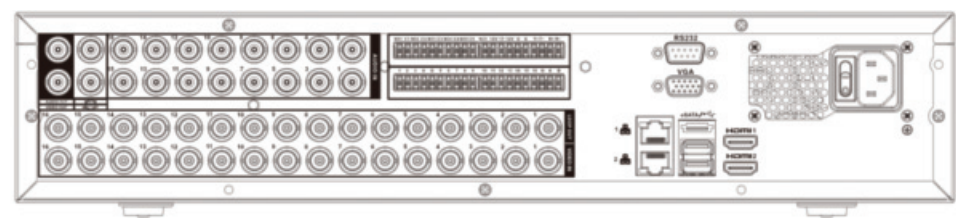
- 2U Penta-Brid Embedded LINUX processor
- H.265+/H.265 dual-stream video compression
- Supports HDCVI/AHD/TVI/CVBS/IP video inputs
- Supports 64 channels of IPC access, each channel up to 12MP input
- Max 256Mbps incoming bandwidth
- HDMI1 4K@60fps output
- 8 SATA Ports, up to 10TB capacity for each disk
- Built-in web server & Multifunction VMS
- **AI Functions ONLY Supported on BNC Inputs, recommended Resolution of 2.1MP or higher:**
  - Up to 16 channel Fenced Area Protection/Line crossing
  - Up to 4 channel video stream face recognition
  - Up to 24 face pictures/sec processing
  - Up to 20 face databases with 100,000 face images in total



FREE Multisite VMS software  
Download from [www.watchnetinc.com](http://www.watchnetinc.com)



Back Panel



Model	PNT-16EXAI	
System	Main Processor	Embedded Processor
	Operating System	Embedded LINUX
Fenced Area Protection	Performance	16 channel, 10 IVS rules for each channel
	Object classification	Human/Vehicle secondary recognition for Line Crossing and intrusion
	AI Search	Search by target classification (Human, Vehicle)
Face Recognition	Performance	Max 24 face pictures /sec processing (modeling and comparing) 4 channel video stream face recognition
	Stranger Mode	Detect strangers' faces(not in device's face data base). Similarity threshold can be set manually
	AI Search	Up to 8 target face images search at same time, similarity threshold can be set for each target face image
	Database Management	Up to 20 face databases with 100,000 face images in total. Name, gender, birthday, nationality, address, ID information can be added to each face picture
	Database Application	Each database can be applied to video channels independently
	Trigger Events	Buzzer, Voice Prompts, Email, Snapshot, Recording, Alarm Out, PTZ Activation, etc.
Metadata	Face	Gender, age, glasses, beard, mask
	AI Search	Support search target video by metadata
Video and Audio	Analog Camera Input	16 Channel, BNC
	HDCVI Camera	4K, 6MP, 5MP, 4MP, 1080P@25/30fps, 720P@50/60fps, 720P@25/30fps
	AHD Camera	5MP, 4MP, 3MP, 1080P@25/30, 720P@25/30fps
	TVI Camera	5MP, 4MP, 3MP, 1080P@25/30, 720P@25/30fps
	CVBS Camera	PAL/NTSC
	IP Camera Input	64 Channel, each channel up to 12MP
	Audio In/Out	16 Audio In, 1 Audio Out, BNC
	Two-way Talk	1 Mic In, 1 Mic Out, BNC
Recording	Compression	H.265+/H.265/H.264+/H.264
	Resolution	4K, 6MP, 5MP, 4MP, 3MP, 1080P, 720P, 960H, D1, CIF
	Record Rate	<b>Main stream:</b> 4K(1~7fps); 6MP(1~10fps); 5MP(1~12fps); 4MP/3MP(1~15fps); 4M-N/1080P/720P/960H/D1/CIF/QCIF (1~25/30fps) <b>Sub stream:</b> 960H(1~15fps); D1/CIF/QCIF(1~25/30fps)
	Bit Rate	32Kbps ~ 8192Kbps Per Channel
	Record Mode	Manual, Schedule (General, Continuous), MD (Video detection: Motion Detection, Video Loss, Tampering), Alarm, Stop
	Record Interval	1 ~ 60 min (default: 60 min), Pre-record: 1 ~ 30 sec, Post-record: 10 ~ 300 sec

Display	Interface	2 HDMI, 1 VGA
	Resolution	<b>HDMI 1:</b> 3840×2160, 2560×1440, 1920×1080, 1280×1024, 1280×720 <b>HDMI2/VGA:</b> 1920×1080, 1280×1024, 1280×720
	Multi-screen Display	When IP extension mode not enabled: 1/4/8/9/16 When IP extension mode enabled: 1/4/8/9/16/25/36/64
	OSD	Camera title, Time, Video loss, Camera lock, Motion detection, Recording
Network	Interface	2 RJ-45 Ports (1000M)
	Network Function	HTTP, HTTPS, TCP/IP, IPv4/IPv6, Wi-Fi, 3G/4G, SNMP, UPnP, RTSP, UDP, SMTP, NTP, DHCP, DNS, IP Filter, PPPoE, DDNS, FTP, Alarm Server, P2P, IP Search (Supports WatchNET IP camera, DVR, NVS)
	Max. User Access	128 users
	Smart Phone	iPhone, iPad, Android
Video Detection and Alarm	Interoperability	ONVIF 16.12, CGI Conformant
	Trigger Events	Recording, PTZ, Tour, Video Push, Email, FTP, Snapshot, Buzzer and Screen Tips
	Video Detection	Motion Detection, MD Zones: 396 (22 × 18), Video Loss, Tampering and Diagnosis
	Alarm input	16
Playback and Backup	Relay Output	6
	Playback	1/4/8/16
	Search Mode	Time /Date, Alarm, MD and Exact Search (accurate to second)
	Playback Function	Play, Pause, Stop, Rewind, Fast play, Slow Play, Next File, Previous File, Next Camera, Previous Camera, Full Screen, Repeat, Shuffle, Backup Selection, Digital Zoom
Storage	Backup Mode	USB Device/Network
	Internal HDD	8 SATA Ports, up to 10TB capacity for each disk
	eSATA	1 Port
	Raid	0, 1, 5, 6, 10
Auxiliary Interface	USB	4 USB Ports (2 USB 2.0 , 2 USB 3.0)
	RS232	1 port, For PC communication & Keyboard
	RS485	1 Port, for PTZ Control
Electrical	Power Supply	AC100V-240V, 50/60Hz
	Power Consumption	<20W (Without HDD)
Construction	Dimensions	2U, 440mm×455mm×95mm (17.3" x 17.9" x 3.7")
	Net Weight	6.9kg /15.2lb (without HDD)
	Gross Weight	9.8kg / 21.6lb
Environmental	Installation	Desktop installation
	Operating Conditions	-10°C ~ +55°C (+14°F ~ +131°F), 0~ 90% RH
	Storage Conditions	-20°C ~ +70°C (-4°F ~ +158°F) , 0~ 90% RH

\* All product names, logos and brands are property of their respective owners. All company products and service names used on this box/website/brochure are for identification purposes only. Use of these names, logos and brands does not imply endorsement. 2019 WatchNET Inc. © All Rights Reserved All product specifications are subject to change without notice.

**CANADA:**  
351 Ferrier Street, Unit 5  
Markham, ON L3R 5Z2  
Toll Free: 1-866-843-6865  
Tel: 416-410-6865  
Fax: 1-866-331-3341

**USA:**  
171 Cooper Ave. Suite 110  
Tonawanda, NY 14150 USA  
Toll Free: 1-855-404-3193  
Local: 1-716-877-7277  
Fax: 1-866-331-3341

Sept 16, 2019

info@watchnetinc.com  
www.watchnetinc.com

**INDIA:**  
RZ- 2, Ground Floor, Kapashera  
Opp Kapashera Police Station  
New Delhi-110037  
Tel/Fax: + 91 11 26816005

**UAE:**  
P O Box 126312  
No 703, Oxford Towers  
Business Bay, Dubai, UAE  
Tel: + 971 4 2767117