

4K

XVI

ENHANCED CVI
MegaPixel over UTP/Coax



XVI-80VDF-IR28

4K HD CVI IR Dome Camera



8MP HD Dome Camera

- 1/2.7 inch 8MP HD CMOS image sensor
- 120dB true WDR, 3DNR
- Max. 4K resolution
- CVI/CVBS/AHD/TVI switchable
- 2.8mm Fixed lens
- Max. IR length 30m/98ft, Smart IR
- IP67, IK10, 12V±30% DC

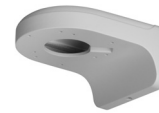


FREE Multisite VMS software
Download from www.watchnetinc.com

Optional Brackets:



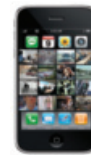
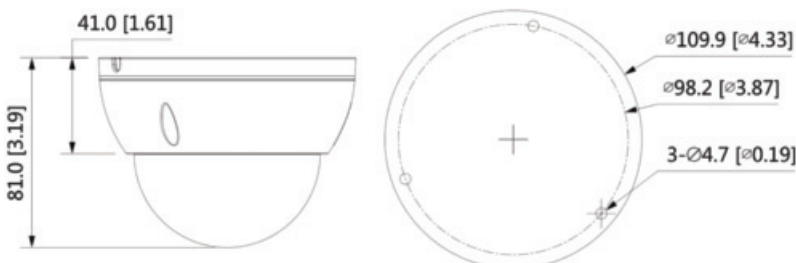
BRACK-PM-06



BRACK-WM-48



BRACK-BB-44



iPhone



| Model | XVI-80VDF-IR28 |
|--------------------------|--|
| Camera | |
| Image Sensor | 1/2.7" 8MP HD CMOS Image Sensor |
| Effective Pixels | 3840 (H) x 2160 (V), 4K |
| IR On/Off Control | Auto / Manual |
| Electronic Shutter Speed | PAL: 1/3s–1/100000s / NTSC: 1/4s–1/100000 |
| Min. Illumination | 0.03Lux/F2.0, 30IRE, 0Lux IR on |
| IR Distance | Up to 30m (98feet) |
| IR LEDs | 12 |
| Video | |
| Resolution | 4K (3840×2160); 5M (2592×1944); 4M (2560×1440); 960H (960× 576/960×480) |
| Frame Rate | CVI: 4K@15fps; 5M@20fps; 4M@25fps/30fps; CVBS: PAL/NTSC AHD: 4K@15fps; 5M@20fps; 4M@25fps/30fps TVI: 4K@15fps; 5M@20fps; 4M@25fps/30fps |
| Video Output | 1-channel BNC high definition video output / CVBS video output (Can switch) |
| Day/Night | Auto switch by ICR |
| Noise Reduction | 2D & 3D NR |
| BLC Mode | BLC/HLC/WDR(120dB) |
| White Balance | Auto / Manual |
| Gain Control | Auto / Manual |
| White Balance | Auto / Manual |
| Smart IR | Yes |
| Electronic Defog | Yes |
| Digital Zoom | 4X |
| Mirror | Off/On |
| Privacy Masking | Off/On (8 area, rectangle) |
| Lens | |
| Lens Type | Fixed focal |
| Mount Type | M12 |
| Focal Length | 2.8mm fixed |
| Max Aperture | F2.0 |
| Angle of View | 125°×105°×56° (diagonal x horizontal x vertical) |
| Close Focus Distance | 1m/1.8m (3.28ft/5.9ft) |
| Iris Type | Fixed iris |
| Port | |
| Video Port | Video output choices of CVI/TVI/AHD/CVBS by one BNC port |
| Power | |
| Power Supply | 12V ±30% DC |
| Power Consumption | Max 4.8W (12V DC, IR on) |
| Environmental | |
| Operating Conditions | -40°C ~ +60°C (-40°F ~ +140°F) <95% (non-condensation) |
| Storage Conditions | -40°C ~ +60°C (-40°F ~ +140°F) <95% (non-condensation) |
| Ingress Protection | IP67 |
| Vandal Resistance | IK10 |
| Construction | |
| Casing | Metal throughout the whole casin |
| Dimensions | Φ109.9mm × 81.0mm (Φ4.33" × 3.19") |
| Net Weight | 0.32kg (0.71lb) |
| Gross Weight | 0.46kg (1.01lb) |

* All product names, logos and brands are property of their respective owners. All company products and service names used on this box/website/brochure are for identification purposes only. Use of these names, logos and brands does not imply endorsement. 2019 WatchNET Inc. © All Rights Reserved. All product specifications are subject to change without notice.

CANADA:
351 Ferrier Street, Unit 5
Markham, ON L3R 5Z2
Toll Free: 1-866-843-6865
Tel: 416-410-6865

USA:
171 Cooper Ave. Suite 110
Tonawanda, NY 14150 USA
Toll Free: 1-866-843-6865
Local: 1-716-877-7277

Aug 28, 2019

info@watchnetinc.com
www.watchnetinc.com

INDIA:
RZ- 2, Ground Floor
Kapashera
Opp Kapashera Police Station
New Delhi-110037
Tel/Fax: +91 11 26816005

UAE:
P O Box No 126312
Office Suite 703
Oxford Towers, Business Bay
Dubai, UAE
Tel: + 971 4 2767117