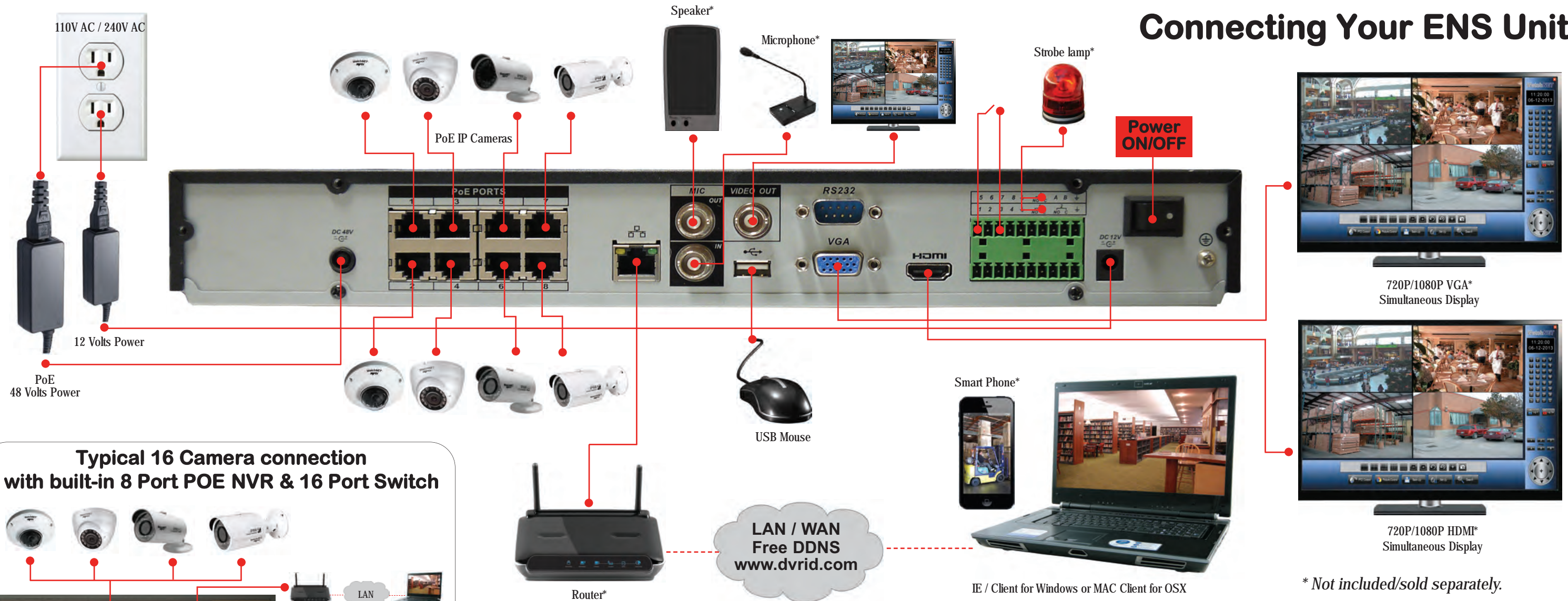
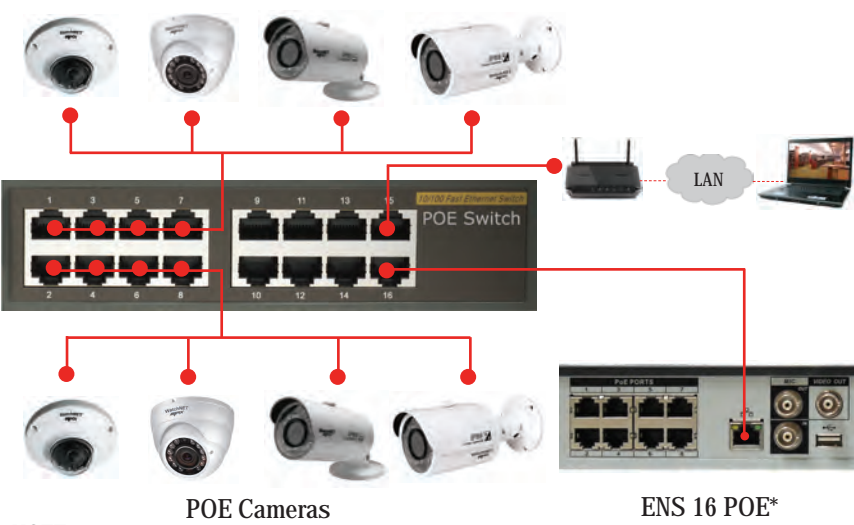


Connecting Your ENS Unit



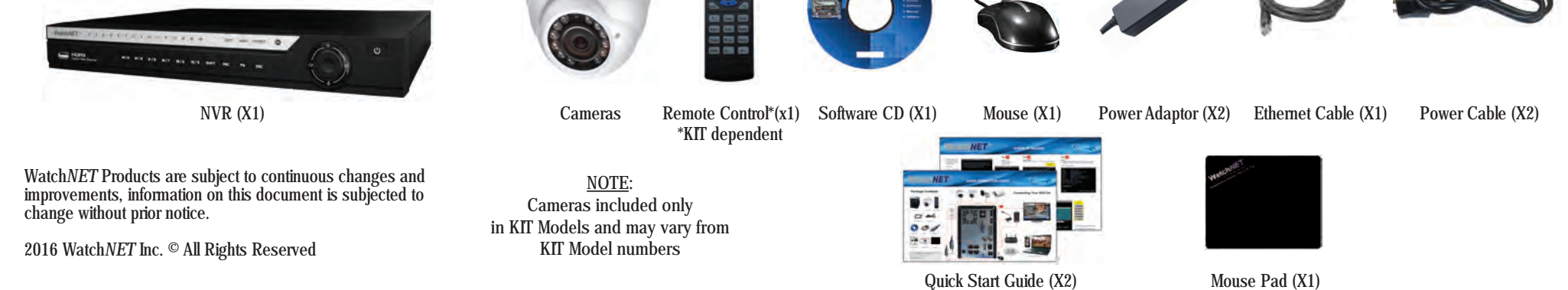
Typical 16 Camera connection with built-in 8 Port POE NVR & 16 Port Switch



NOTE:

1. External 12 or 16 Port POE Switch is needed to connect the additional 8 cameras. (If using regular switch, the cameras must have 12V 1Amp Power Source connected)
2. Launch the Config tool from the software CD and assign IP Address to cameras to suite the local LAN configuration.
3. Please see hardware manual on the software CD for more instructions.

Package Contents:



WatchNET Products are subject to continuous changes and improvements, information on this document is subjected to change without prior notice.

2016 WatchNET Inc. © All Rights Reserved

NOTE:
Cameras included only in KIT Models and may vary from KIT Model numbers

* Not included/sold separately.

When first booting up the NVR, Start-up Wizard will initiate. Clicking "next step" will start the Wizard.

Cancel to exit

Use the mouse to navigate thru the setup



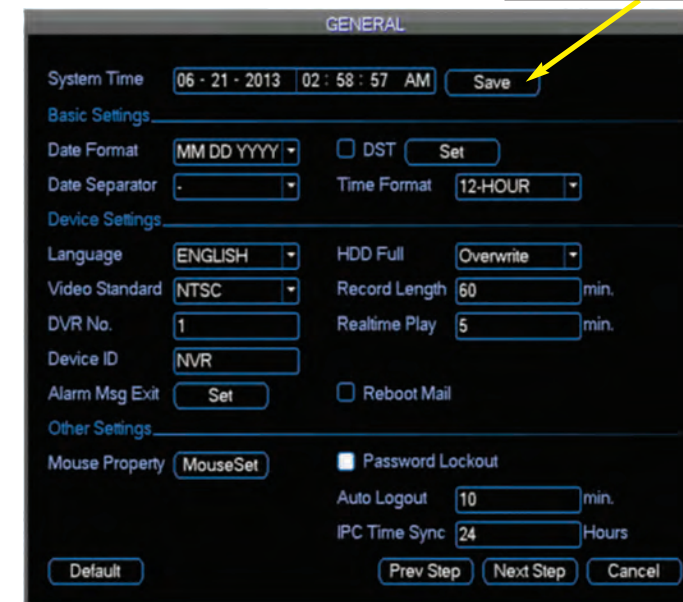
Step 1

Login
Systems Default
Username: admin
Password: 1234



Step 2

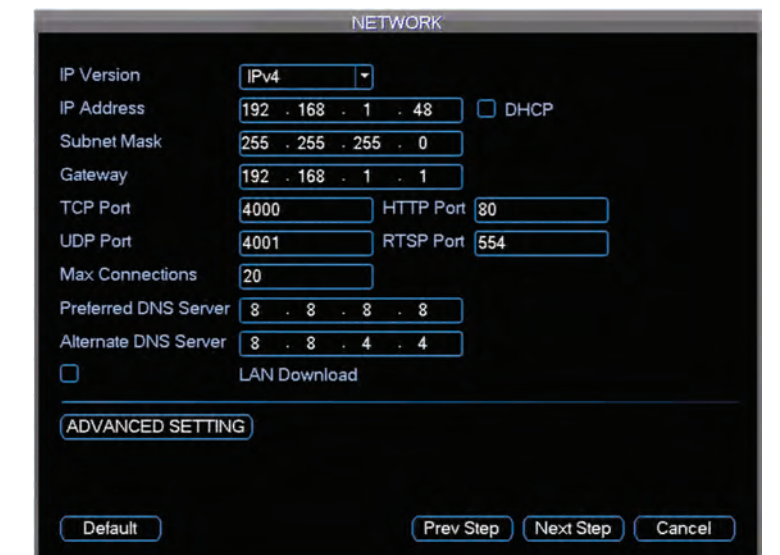
System Settings
Adjust the time and date. Click "Save" before moving to the next step.



Step 3

Network
Change the default network to match the local network. Ask the network administrator for the proper IP address, Gateway and Subnet Mask.

Click Next Step when done



Step 4

Remote Device (Connecting IP Cameras)
MPIX cameras will auto-enroll, will be assigned an IP and camera number
Defaults:
Cam 1 will be assigned to 10.1.1.65
Cam 2 will be assigned to 10.1.1.66
Cam 3 will be assigned to 10.1.1.67
Cam 4 will be assigned to 10.1.1.68

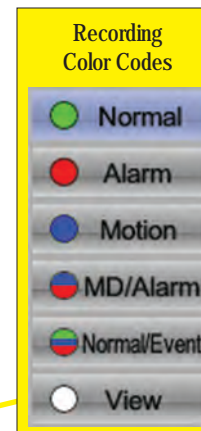
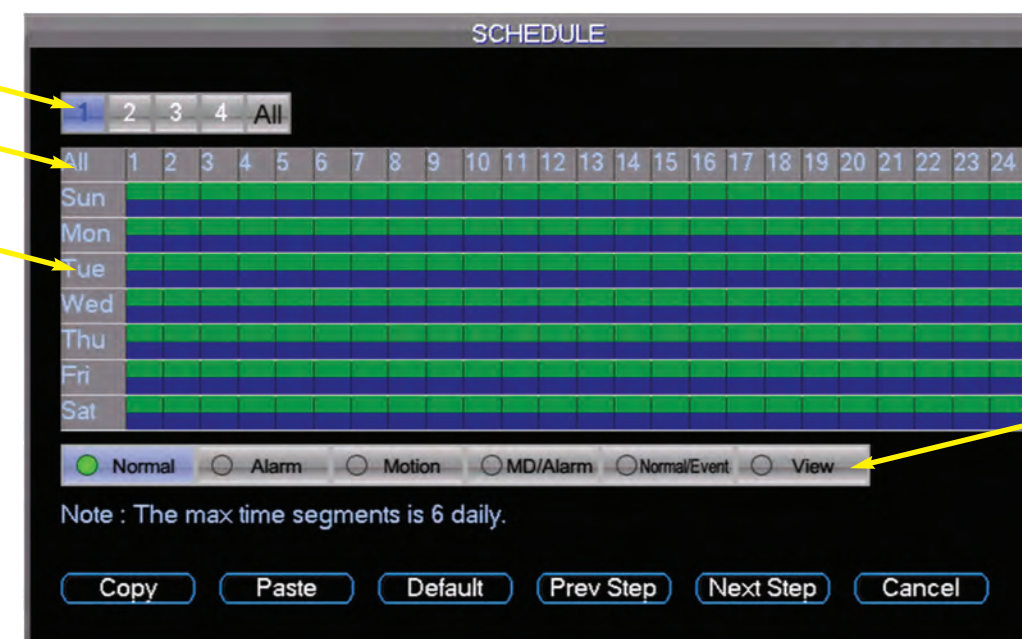


Step 5

Set Recording Schedule
User can choose what the NVR records. Normal, Alarm, Motion or all events

By default all NVRs are set to record motion detection 24/7

Camera Number
Hours of the day
Days of the week



Click Next Step and Close the Wizard.

Now the system is setup and ready for recording.