

4K



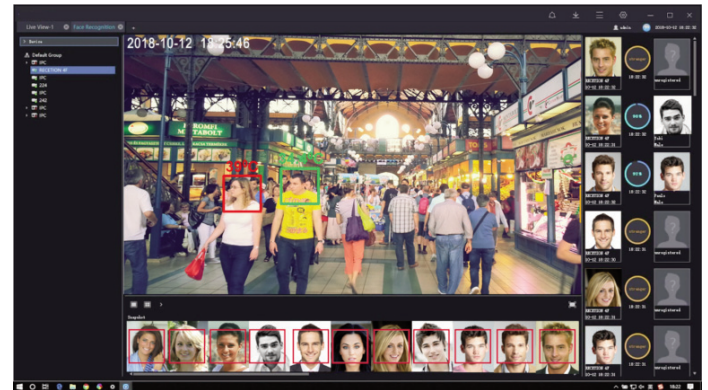
EN-16POEAI-S

32CH 4HDD AI NVR with 16CH POE



Features:

- Up to 32ch IP cameras access
- Up to 32ch picture stream face recognition
- Up to 20 face pictures / sec processing
- Up to 16 face databases with 10,000 face images in total
- 1 RJ45 10M/100M/1000M network interface
- 16ch POE ports
- Simultaneous HDMI & VGA up to 4K output
- Easy to use same interface of GUI/WEB/Client



Body Temperature Detection System

**Contactless Access Control with Temperature Detection
Fully integrated with WatchNET Access control software**



Access Granted



Access Denied



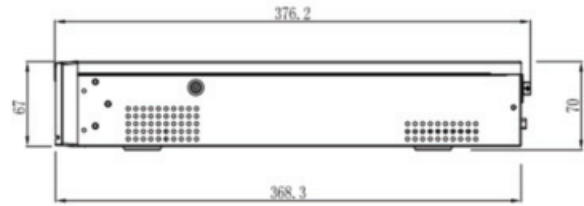
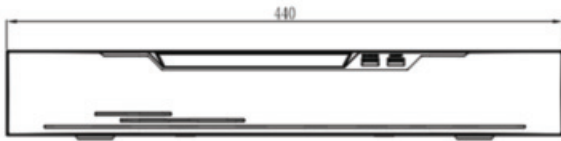
Stand alone operation supported



System	
Main Processor	Dual-core embedded processor
Operating System	Embedded LINUX
Video and Audio	
IP Camera Input	32 Channel
Audio I/O	1/1, RCA
Two-way Talk	Yes
Face Recognition	
Performance	Max 20 face pictures/sec processing 32ch picture stream face recognition
Stranger Mode	Detect strangers' faces (not in device's face database) Similarity threshold can be set manually
AI Search	Search for image by image Search image by properties
Database Management	Up to 16 face databases with 10,000 face images in total
Database Application	Every data can be applied to any channel
Trigger Events	Buzzer, Alarm push, Alarm prompt, Email, Alarm Out, Compare the result simultaneously
AI Recognition	
Face	Face comparison results [registrant (name and ID), stranger, channel, similarity]
Vehicle	Recently captured image display
Human Body	Recently captured image display
Non-motor Vehicle	Recently captured image display
AI Search	Time, Properties, Pictures, Gender, Riding style, Vehicle color, License plate
Display	
Interface	2 HDMI, 1 VGA
Resolution	HDMI 1: 1920×1080,1440×900, 1280×1024 HDMI 2: 3840×2160,1920×1080, 1440×900, 1280×1024 VGA: 1920×1080, 1440×900, 1280×1024
Decoding Capacity	32ch 720P, 16ch 1080P, 8ch 4MP, 4ch 8MP, 1ch 12MP
Multi-screen Display	1st Screen: 1/4/8/9/16/32/36 2nd Screen: 1/4/8/9/16
Recording	
Compression	H.265+/ H.265/H.264+/H.264
Resolution	12MP, 8MP, 6MP, 5MP, 4MP, 3MP, 1080P, 720P, D1
Record Rate	320Mbps
Bit Rate	128Kbps ~ 8192Kbps Per Channel
Record Mode	Manual, Schedule (Regular, Continuous), Motion Detection, Video Loss, Camera Tamper, Alarm in
Record Interval	Post-record: 30 ~ 60 sec
Video Detection and Alarm	
Trigger Events	Recording, Buzzer, Push message, Pop up message
Video Detection	Motion Detection, Video Loss, Camera Tamper
Alarm In/Out	2/1
Playback and Backup	
Sync Playback	16/9/4/1
Search Mode	Time/Date, Alarm, Picture grid, Event
Playback Function	Play, Pause, Stop, Rewind, Fast play, Slow Play, Next File, Previous File, Next Camera, Previous Camera, Full Screen, Shuffle, Backup Selection, Digital Zoom
Backup Mode	USB Device

Network	
Network Function	HTTP, HTTPS, TCP/IP, IPv4, UPnP, UDP, RTSP, SMTP, NTP, DNS, DHCP, P2P, IP Filter, DDNS, 802.1X, SNMP, 3G/4G, PPPoE
Max. User	Access 10 users
Smart Phone	iPhone, iPad, Android
Interoperability	ONVIF, SDK, CGI
Storage	
Internal HDD	4 SATA Ports, up to 12TB for each HDD
eSATA	Support
Cloud Storage	Support
Disk Array	
Array Type	RAID 5, RAID 6, RAID 10
Interface	
Interface	2 RJ-45 port (10/100/1000Mbps)
PoE Interface	16ch 100Mbps, IEEE 802.3a
PoE Max Power	160W
USB	3 ports (USB 2.0 x2, USB3.0 x1)
RS485	Support
RS232	Support
General	
Power Supply	AC100~240V
Power Consumption	< 15W (without HDD)
Operating Conditions	-10 °C ~ 50 °C (14 °F ~ 122 °F)
Storage Conditions	Less than 90% RH
Certifications	CE/FCC
Dimensions	440 × 383.6 × 70mm 17.32" × 15.10" × 2.76"
Net Weight	4.4kg (No disk) / 9.70lb (No disk)

Dimensions(mm)



Rear Panel



** All product names, logos and brands are property of their respective owners.
All company products and service names used on this box/website/brochure
are for identification purposes only. 2020 WatchNET Inc. © All Rights Reserved
All product specifications are subject to change without notice.*

CANADA:
351 Ferrier Street, Unit 5
Markham, ON L3R 5Z2
Toll Free: 1-866-843-6865
Tel: 416-410-6865

USA:
171 Cooper Ave. Suite 110
Tonawanda, NY 14150 USA
Toll Free: 1-866-843-6865
Local: 1-716-877-7277

UAE:
P O Box 126312
No 703, Oxford Towers
Business Bay, Dubai, UAE
Tel: + 971 4 2767117

May 05, 2020

info@watchnetinc.com
www.watchnetinc.com