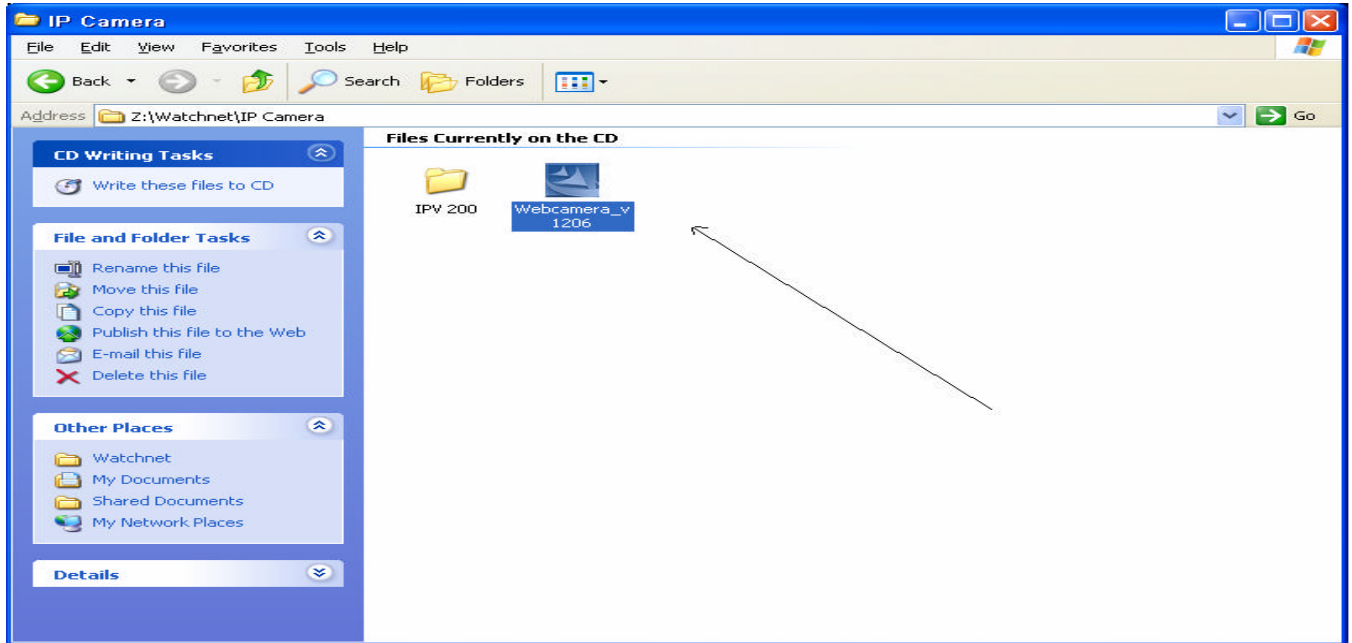


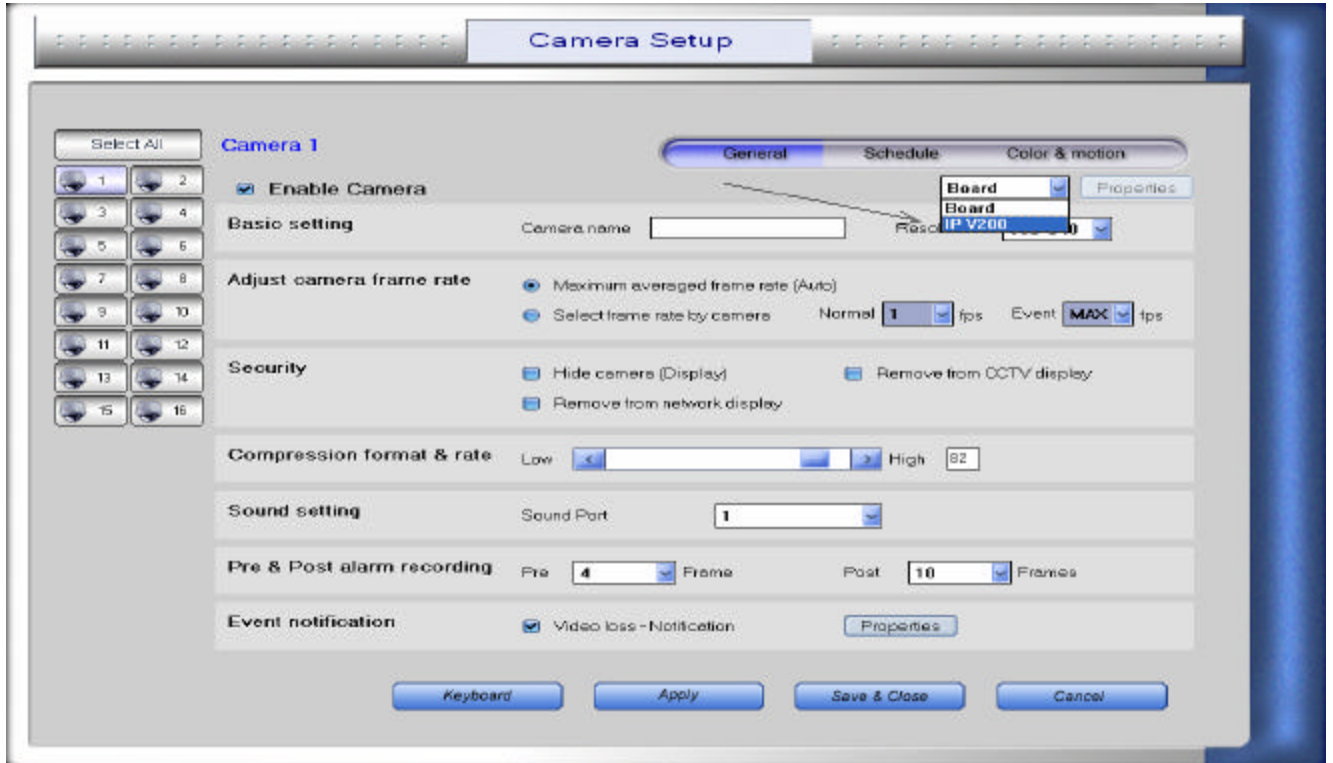
# IPV200 Quick Start Manual

Step1: Please install the IP Camera patch from the DVR software CD

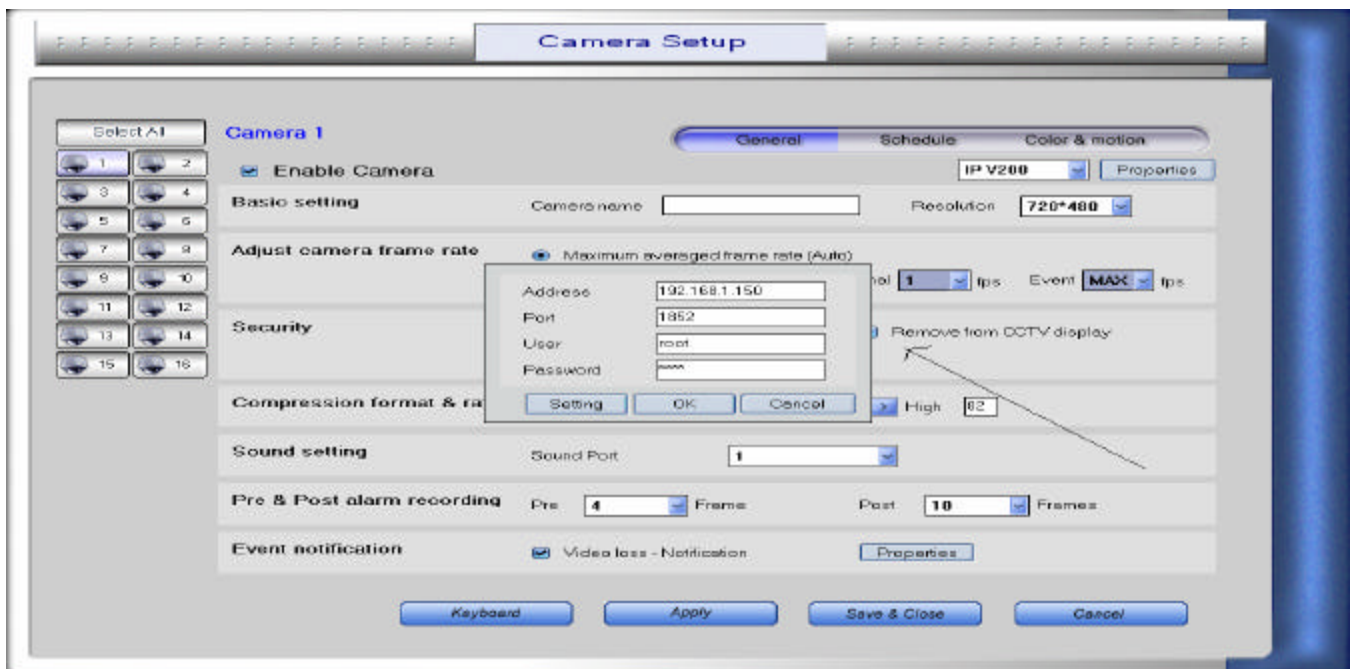


Step 2: Select your IP Server device (IP V200) installing our IP Server.

Step 3: Log into the DVR Settings then Camera to located the IP Server option

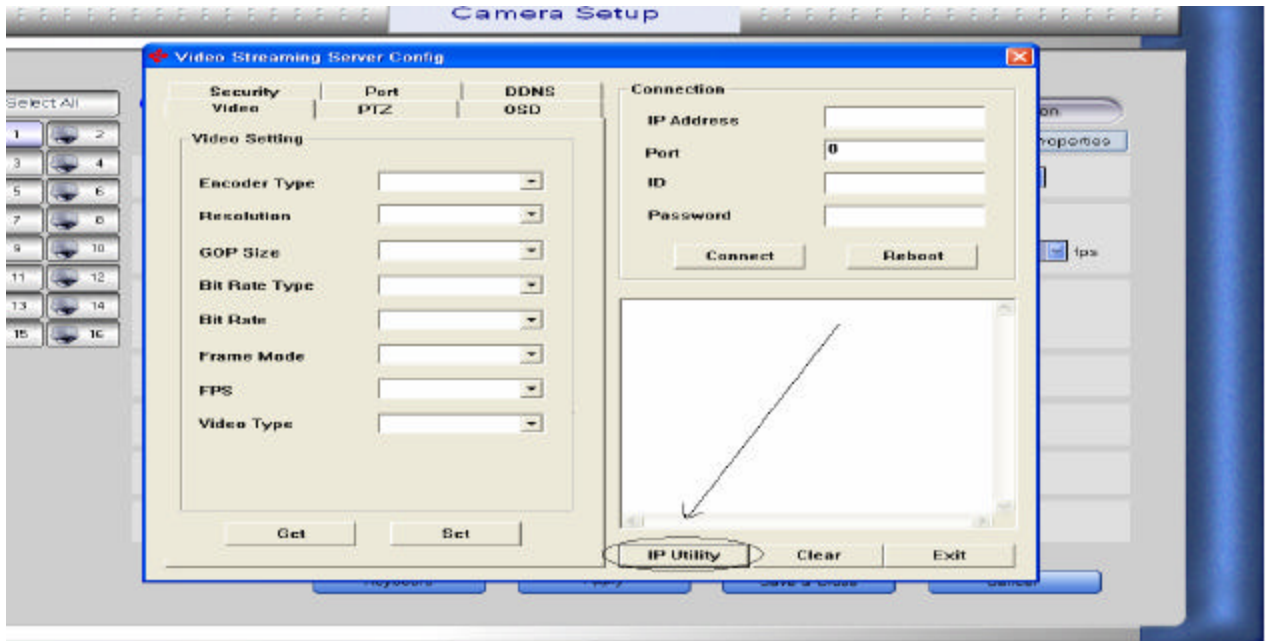


Step 4: Go into the IP Server settings by hitting Properties.

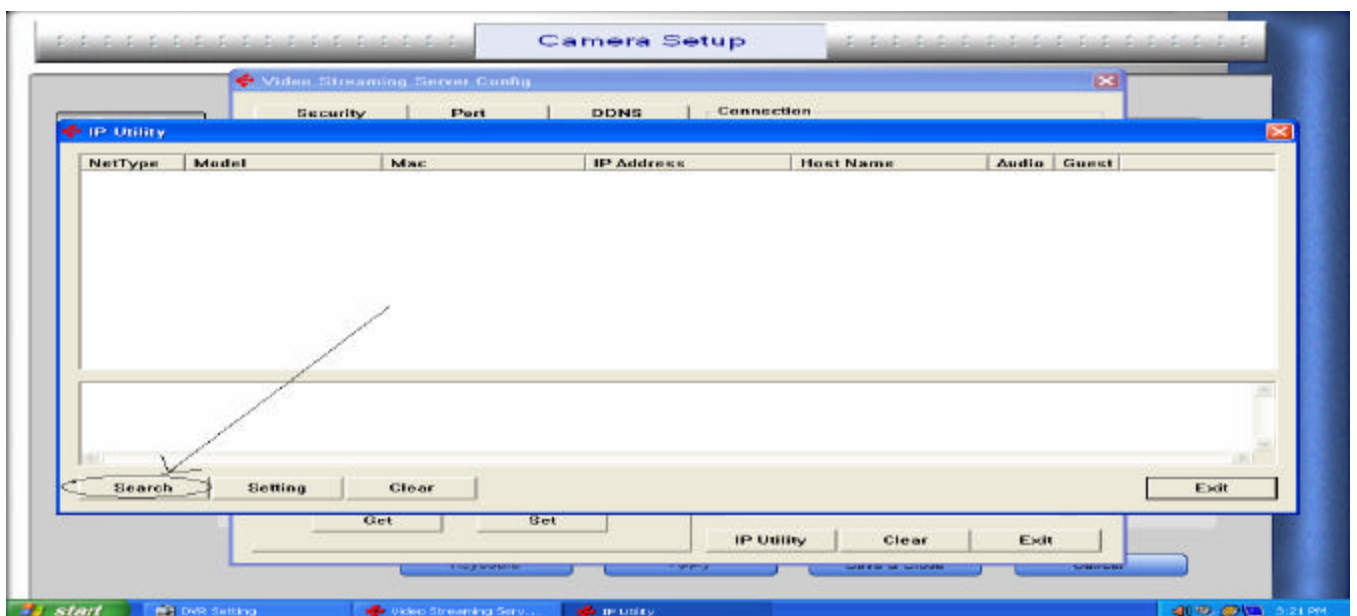


Step 5: Default IP is located at the bottom of the IPV200 box  
192.168.1.2  
Default username, password and port  
Username: **root**  
Password: **pass**  
Port: **1852**

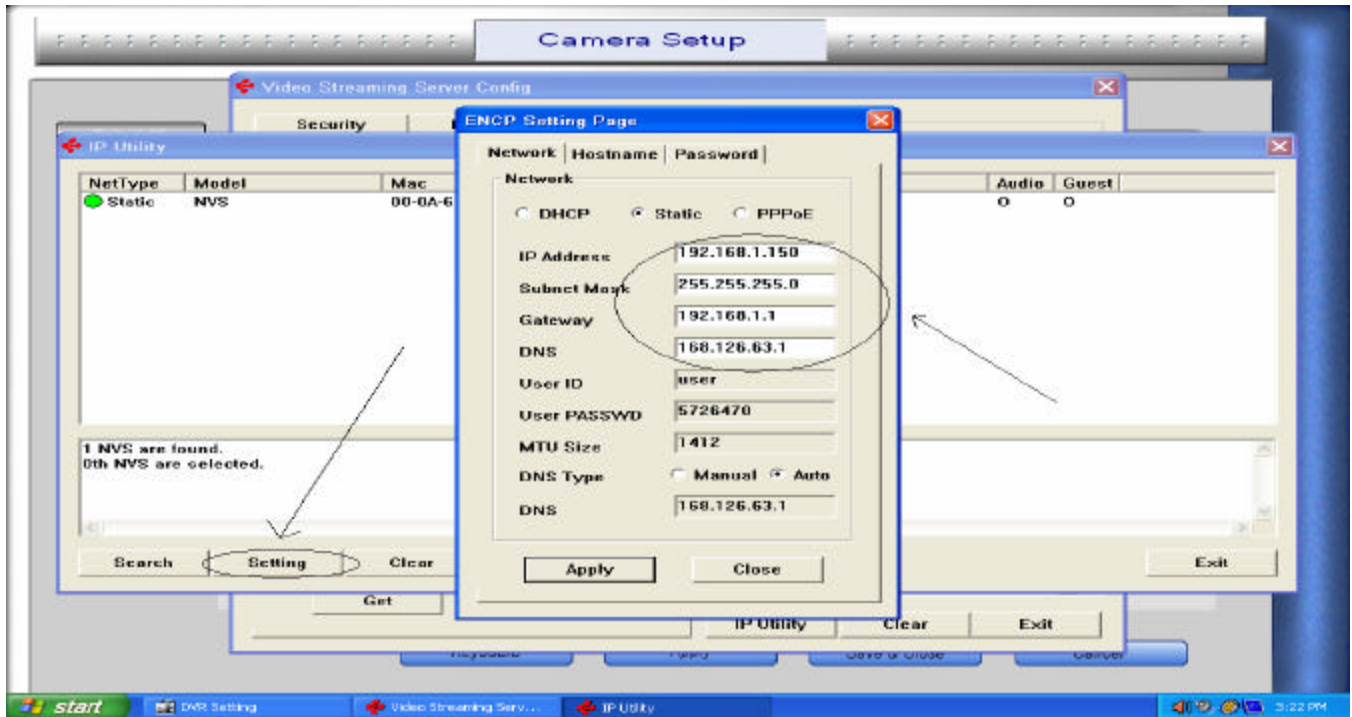
Step 6: Detect your IPV Server device, enter Setting then IP Utility



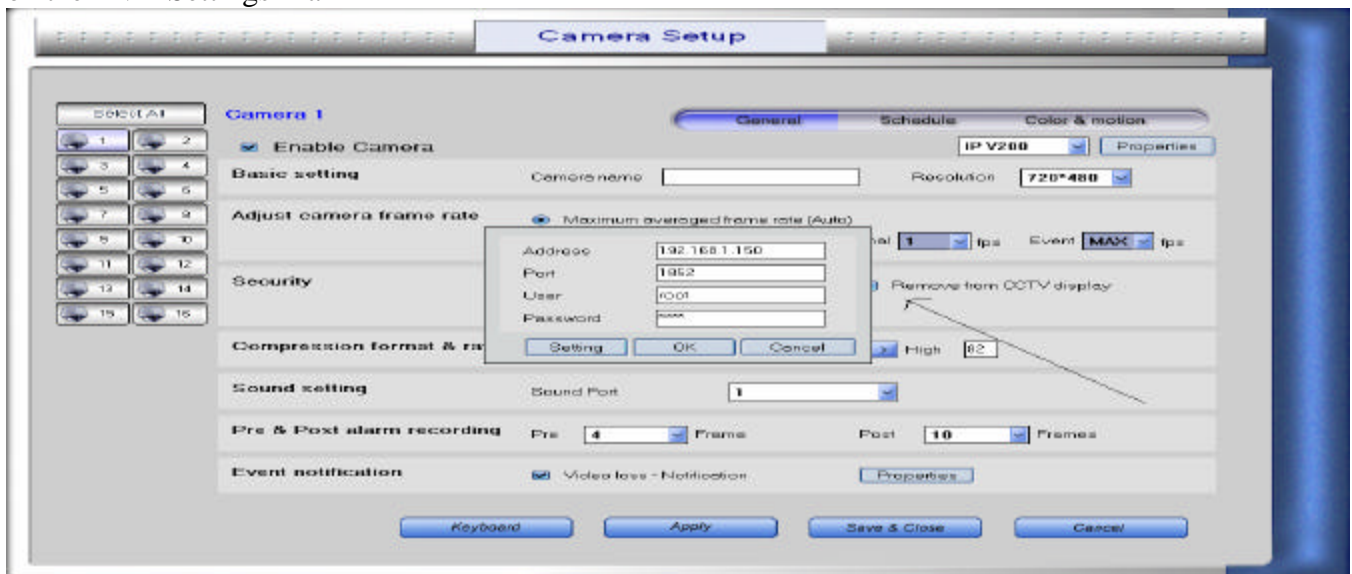
Step 7: Search for the IPV Server



Step 8: Once your IPV Server is detected please go to “Setting” to locate the IP address, copy this IP address. This is also where you can change the IPV Server information.



Step 9: Please exit the IP Utility and input the information in the IP Server box, located on the DVR Settings Main



Step 10: Apply / Save & Close and then launch the DVR Main.