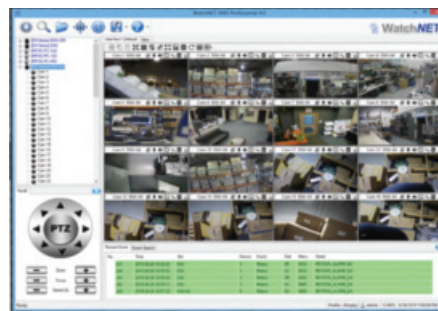


Ordering information

Part Number	Description
VMS Software	
VMS LITE	VMS LITE Client Software, 64ch
VMS Hardware	
VMS-LITE-1	VMS Lite, 1 monitor with 16 ch. display (incl. video card)
VMS-LITE-2	VMS Lite, 2 monitors with 64 ch. display (incl. video card)
W4100	Video Graphics Card only (4 monitor output, mini DP)
W600	Video Graphics Card only (6 monitor output, mini DP)

Hardware Requirements

Category	Specification
Operating System	Windows 7, 8, 10 Home Basic, Home Premium, Professional, Enterprise, Ultimate Windows Server 2008, 2012 64bit platform
Processor	Intel Core i7-3520 or above
Memory	4GB or above
Display	AMD HD-5450 or above, 2GB Memory Recommended (for more than 64 channel simultaneous display) nVidia Geforce GT-370 Intel HD, 2GB Memory or above
HDD	SATA 7200RPM, 500 GB or above
Network	1GB or above



VMS LITE Client



Floating Monitoring / Auto Switching

All product specifications on this catalogue are subject to change without notice.
All logos & trade marks represent the registered users only. All rights reserved.

CANADA:

351 Ferrier Street, Unit 5
Markham, ON L3R 5Z2
Toll Free: 1-866-843-6865
Tel: 416-410-6865

USA:

171 Cooper Ave. Suite 110
Tonawanda, NY 14150 USA
Toll Free: 1-866-843-6865
Local: 1-716-877-7277

UAE:

P O Box 126312
No 703, Oxford Towers
Business Bay, Dubai, UAE
Tel: + 971 4 2767117

info@watchnetinc.com
www.watchnetinc.com

Tech Support:
watchnetinc.com/tech-support.asp
Tel: +1-866-843-6865



HD VMS LITE

A Professional Video Management System that comprises of a powerful software solution that integrates all WatchNET IP, Analog and XVi Cameras, Recorders, Servers and Storage

WatchNET VMS LITE provides the industry's best HD VMS solution with rich and professional functions for optimum service to the security industry. By centralizing security management and decentralizing security video stream networking, we can achieve unlimited video connection capability and video storage expandability. This provides an architecture of scalability, flexibility and robustness.

Our solution provides a vast array of features:

- Supports all WatchNET IP, XVi and Analog cameras, NVRs, and Video Storage devices
- Supports unlimited IP camera connections via multiple VMS Clients
- Versatile live monitoring modes supporting multi-monitor, unlimited floating windows for multiple user views, Event Alerts and Auto-Switching
- Digital PTZ, Digital Zoom and Magnifier for video forensic investigation
- Auto-popup and thumb-nail for snapshot and backup
- System event alerts for network disconnect, disk failure, and system down alarms
- Integrates Fish-Eye and Video Analytics cameras
- Supports Video Display Duplication

www.watchnetinc.com

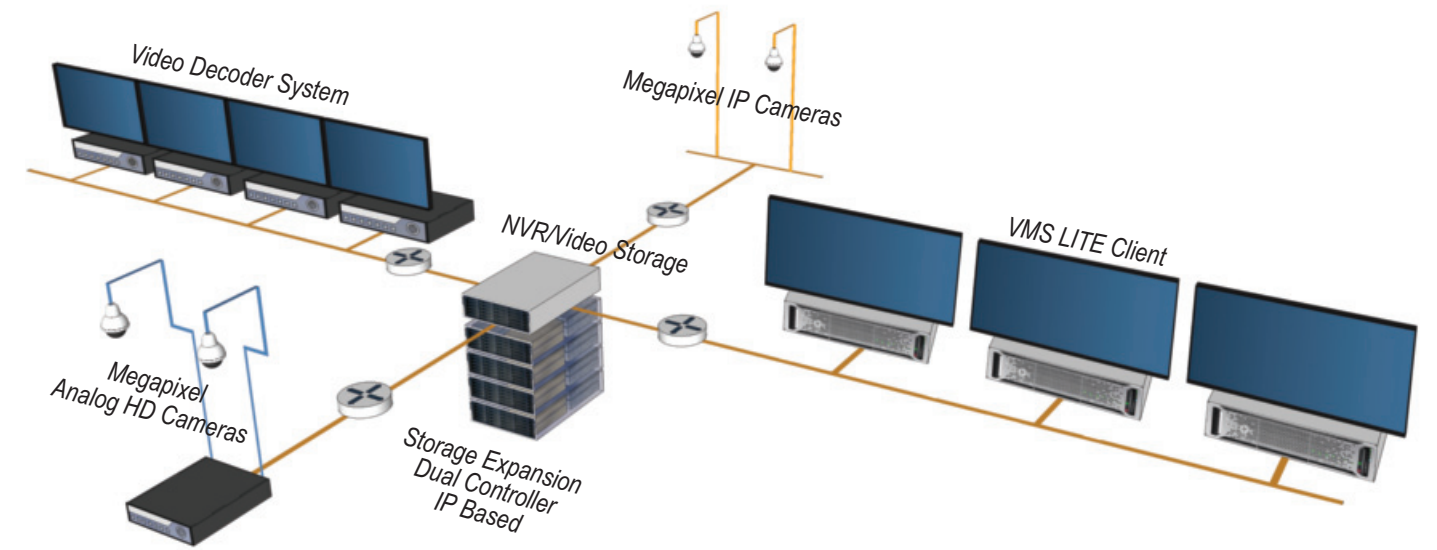


VMS LITE Specifications:

Configuration	<ul style="list-style-type: none"> • Multiple devices and camera registration • P2P support • Network discovery for camera, NVR and DVR • Web Client interface for full configuration • Export/Import configuration • Selective camera installation • Multiple groups & users creation • Multiple Privileges by groups or users • Selective device & camera by groups or users • Event action by events • Event action for email, snapshot, audio alert and system-wise alerts • Critical System Event Notification for Disk, System Reboot and Network Disconnection • Network port configuration • Drag & Drop channel assignment, swapping and copy • On-Screen camera name modification
Live View	<ul style="list-style-type: none"> • Hardware video acceleration • 4-way Live view modes of Normal, Auto Switching, Event Popup • Up to 64 split per User View • Unlimited User View creation • 1, 4, 6, 9, 10, 13, 16, 25, 36, 49, 64, W6, W12, W15 split layout • Easy channel assignment, swapping and copy with mouse drag & drop • Unlimited Floating User View creation • Multiple tab based User View creation • Switchable original Video Image size • Camera name, device name display • Motion event indicator • Live mode manual snapshot • On-screen PTZ control • Manual Main/Sub-stream switching • Two-way audio • Audio streaming • Digital Zoom • Live video magnifier • Instant playback • Automatic main-stream popup
Multiple Displays	<ul style="list-style-type: none"> • Unlimited multiple monitors support (depends on system-wide video connection capability with external graphic devices) • Optimal 1, 2, 4 or 6 multiple monitors • Easy deployment for VMS LITE Client, Auto Switch and Event Popup • Save/ Load layout setting
Multiple User View	<ul style="list-style-type: none"> • Unlimited multiple User Views creation • Easy window deployment for User Views • Versatile layout • Save/ Load layout setting for all User Views • Full function on each User View for Instant Playback, Snapshot, 2-way audio, Digital Zoom, Magnifier and so on

Auto Switching View	<ul style="list-style-type: none"> • A dedicated Auto-switch User View • Easy deployment to a dedicated multi-monitor with a floating window type • Easy configuration to control Auto-Switch • Full screen/ Floating layout • Save/ Load layout setting
Event Popup View	<ul style="list-style-type: none"> • A dedicated Event-popup User View • Easy deployment to a dedicated multi-monitor with a floating window type • Automatic channel popup and appending
Instant Playback	<ul style="list-style-type: none"> • Playback instantly on the Live view • Pre-defined duration for playback • Random time search on Instant playback • Snapshot, Digital Zoom, Magnifier on Instant Playback
PTZ	<ul style="list-style-type: none"> • Built-in interface for PTZ operation • On Screen PTZ control on Live view
Event Search	<ul style="list-style-type: none"> • Multiple devices and camera registration • Database wizard for easy configuration • Network discovery for camera, NVR and DVR • Web Client interface for full configuration • Selective camera installation • Multiple groups & users creation • Multiple Privileges by groups or users • Selective device & camera by groups or users • Event action by events with 2 ways popup • Event action for channel popup, email, snapshot, beep and system-wise popup • Critical System Event Notification for Disk, System and Reboot and Network Disconnection • Network port configuration
Remote Playback	<ul style="list-style-type: none"> • Up to 16ch Remote Playback simultaneously • On Screen Control for Playback • Snapshot, Digital Zoom, Magnifier on Playback • Rewind 1 Minute • Frame by Frame playback • Fast/ Slow playback • Main/ Sub-stream selective playback • Download for backup
Log Viewer	<ul style="list-style-type: none"> • Log for System, Application, User, Network, Device, etc. • Event time, Category, Description
User Profile	<ul style="list-style-type: none"> • Save/ Load user configuration including screen layout for versatile User Views • Switch User support
Digital I/O Control	<ul style="list-style-type: none"> • Digital I/O Control on the device explorer • Manual Alarm On/Off
Audio	<ul style="list-style-type: none"> • 2-Way audio • Audio Streaming

WatchNET VMS LITE System Topology



Key Features:

Optimal for megapixel video processing

- Hardware accelerated Video Processing
- Supports more video channels with less system resource consumption
 - Covers real-time full HD resolution (20fps@1920x1080) for 9ch simultaneously, which is optimal for surveillance
 - More than 64ch simultaneous video display for sub-streams.
 - Supporting CIF to 12MP camera resolution

Unlimited camera connections

VMS LITE will centralize video management into a single or multi-location control system with unlimited quantity of video channels.

Legacy system interoperability

VMS LITE supports all analog, HD, and IP video solutions and allows for integration with legacy devices and systems.

Scalable network architecture

VMS LITE networking architecture enables decentralized network stream and bandwidth, while centralizing security management. This enables connection of unlimited number of cameras with network storage and recording.

Support enterprise level of storage

Enterprise level of video storage for high-capacity, extreme performance and data retention security, and can support years of recording data.