



MPix-50DF-IR28AI

SMP IR Fixed Focal Dome Network Camera



Features:

- CE FCC
- 1/2.7" 5 Megapixel progressive scan CMOS
- 2.8mm fixed focal lens
- SENSEFIER Technology
- Output max. 5MP (2592 × 1944) @20 fps, and supports 4MP (2688 × 1520) @25/30 fps
- H.265 codec, high compression rate, low bit rate
- Built-in IR LED, max. IR distance: 30m/98.4ft
- ROI, SMART H.264+/H.265+, flexible coding, applicable to various bandwidth and storage environments
- Rotation mode, WDR(120dB), 3D DNR, HLC, BLC, digital watermarking, applicable to various monitoring scenes
- Intelligent detection: Intrusion, line crossing (support the classification and accurate detection of vehicle and human)
- Abnormality detection: Motion detection, video tampering, scene changing, audio detection, no SD card, SD card full, SD card error, network disconnection, IP conflict, illegal access, voltage detection
- Supports max. 256GB Micro SD card
- 12V DC/POE power supply
- IP67, IK10 protection

AI Functions:

- Fenced Area Protection
- Line Crossing (Person & Vehicle Classification)
- AI Motion Detection

Junction Back Box BRACK-BB-43	Pendant Mount Bracket BRACK-PM-06
Wall Mount Bracket BRACK-WM-49	Pole Mount Bracket BRPOLEMXC

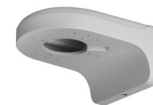
Optional Brackets



BRACK-BB-43
Junction Back Box



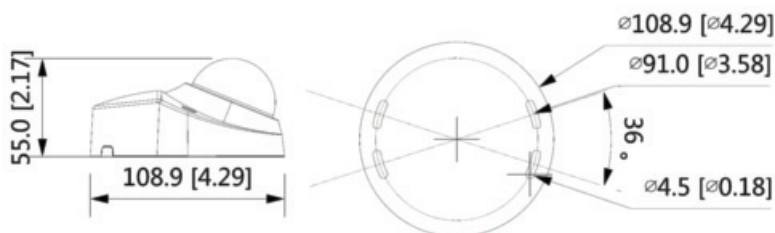
BRACK-PM-06
Pendant Mount



BRACK-WM-49
Wall Mount Bracket



BRPOLEMXC
Pole Mount Bracket



Model		MPIX-50DF-IR28AI			
Camera					
Image Sensor	1/2.7" 5 Megapixel progressive scan CMOS				
Max Resolution	2592 (H) × 1944 (V)				
Min. Illumination	0.005 Lux@F1.6 (Color, 30IRE) 0.0005 Lux@F1.6 (B/W, 30IRE) 0 Lux (Illuminator on)				
ROM / RAM	128MB / 512MB				
S/N Ratio	More than 56dB				
Scanning System	Progressive				
Electronic Shutter Speed	Auto/Manual 1/3 s–1/100000 s				
IR Distance	30 m (98.4ft)				
IR On/Off Control	Auto / Manual				
IR LEDs	8				
Lens					
Lens Type	Fixed-focal				
Mount Type	M12				
Focal Length	2.8mm fixed				
Max. Aperture	F1.6				
Angle of View	Horizontal: 98°; vertical: 72°; diagonal: 130°				
Iris Type	Fixed				
Close Focus Distance	0.9 m (3.0 ft)				
Professional, Intelligent					
Fenced Area Protection	Line Crossing, Intrusion (Recognition of human and vehicle)				
Intelligent Search	Work together with AI NVR to perform refine intelligent search, event extraction and merging to event videos				
Video					
Compression	H.265; H.264; H.264H; H.264B; MJPEG (only supported by sub stream)				
Smart Codec	Smart H.265+ / Smart H.264+				
Video Frame Rate	Main stream: (2592 × 1944@1–20 fps) (2688 × 1520@1–25/30 fps) Sub stream: (704 × 576@1–25 fps/704 × 480@1–30 fps) Third stream: (1280 × 720@1–25/30 fps)				
Stream Capability	3 streams				
Resolution	5M (2592 × 1944); 4M (2688 × 1520); 3M (2304 × 1296); 1080p (1920 × 1080); 1.3M (1280 × 960); 720p (1280 × 720); D1 (704 × 576/704 × 480); VGA (640 × 480); CIF (352 × 288/352 × 240)				
Bit Rate Control	CBR/VBR				
Video Bit Rate	H.264: 3 Kbps–8192 Kbps / H.265: 3 Kbps–8192 Kbps				
Day/Night	Auto(ICR)/Color/B/W				
BLC/HLC	Yes / Yes				
WDR	120dB				
White Balance	Auto/natural/street lamp/outdoor/manual/regional custom				
Gain Control	Auto/Manual				
Noise Reduction	3D DNR				
Motion Detection	OFF/ON (4 areas, rectangular)				
Region of Interest (RoI)	Yes (4 areas)				
Smart Illumination	Yes				
Image Rotation	0°/90°/180°/270° (Support 90°/270° with 1920 × 1080 resolution and lower)				
Mirror	Yes				
Privacy Masking	4 Areas				
Dori Distance	Lens	Detect	Observe	Recognize	Identify
	2.8mm	56m (183.7ft)	22.4m (73.5ft)	11.2m (36.8ft)	5.6m (18.4ft)

Alarm	
Alarm Event	No SD card; SD card full; SD card error; less service time of SD card (smart card supports); network disconnection; IP conflict; illegal access; voltage detection; security exception; motion detection; video tampering; scene changing; intensity change; line crossing; intrusion; AI motion detection
Network	
Ethernet	RJ-45 (10/100 Base-T)
SDK and API	Yes
Protocol	IPv4; IPv6; HTTP; HTTPS; TCP; UDP; ARP; RTP; RTSP; RTCP; RTMP; SMTP; FTP; SFTP; DHCP; DNS; DDNS; QoS; UPnP; NTP; Multicast; ICMP; IGMP; NFS; PPPoE; 802.1x; SNMP
Cyber Security	Video encryption; firmware encryption; configuration encryption; Digest; WSSE; account lockout; security logs; IP/MAC filtering; generation and importing of X.509 certification; syslog; HTTPS; 802.1x; trusted boot; trusted execution; trusted upgrade
Interoperability	ONVIF(Profile S/Profile G); P2P
Scene Self-adaptation	Yes
User/Host	20 (Total bandwidth: 64 M)
Storage	FTP; SFTP; Micro SD Card (support max. 256GB); NAS
Smart Phone	IOS, Android
Power	
Power Supply	12V DC/PoE (802.3af)
Power Consumption	<5.7W
Environmental	
Operating Conditions	-40°C to +60°C (-40°F to +140°F)/less than 95%
Storage Conditions	-40°C to +60°C (-40°F to +140°F)
Protection Grade	IP67; IK10
Construction	
Casing	Metal
Dimensions	55 mm × Φ108.9 mm (2.2" × Φ4.3")
Net/Gross Weight	380g (0.8lb) / 520g (1.1lb)

* All product names, logos and brands are property of their respective owners. All company products and service names used on this box/website/brochure are for identification purposes only. Use of these names, logos and brands does not imply endorsement. 2021 WatchNET Inc. © All Rights Reserved. All product specifications are subject to change without notice.



FREE Multisite VMS software
Download from www.watchnetinc.com

CANADA:
351 Ferrier Street, Unit 5
Markham, ON L3R 5Z2
Toll Free: 1-866-843-6865
Tel: 416-410-6865

USA:
171 Cooper Ave. Suite 110
Tonawanda, NY 14150 USA
Toll Free: 1-866-843-6865
Local: 1-716-877-7277

UAE:
P O Box 126312
No 703, Oxford Towers
Business Bay, Dubai, UAE
Tel: +971 4 2767117

Rev, April 15 2021

info@watchnetinc.com
www.watchnetinc.com