



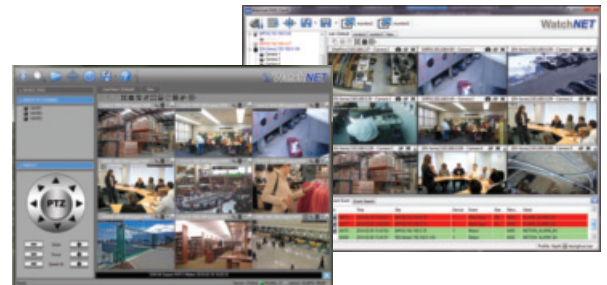
MPIX-50BIMRA

### SMP IR Vari-focal Bullet Network Camera



### CE FC Features:

- 1/2.7" 5Megapixel progressive scan CMOS
- ROI, SMART H.264+/H.265+, flexible coding, applicable to various bandwidth and storage environment
- 20 fps@2592 × 1944, 50/60 fps@1080P(1920 × 1080)
- WDR (120 dB), Day/Night (ICR), 3D DNR, AWB, AGC, BLC
- 2.7 mm–13.5 mm motorized lens
- 2/1 Alarm in/out, 1/1 audio in/out
- Smart IR
- Max. IR LEDs Length 50m/164ft
- Micro SD card 256 GB, IP67
- Supports Electronic Image Stabilization (EIS)
- Multiple network monitoring:
  - Built-in web server & Multifunction VMS
- Smart phones compatible



FREE Multisite VMS Software  
Download from [www.watchnetinc.com](http://www.watchnetinc.com)



### Pro AI Functions:

- Face Capture (Detect & Recognition with attributes)
- Fenced Area protection
- People Counting Functions
- Line Crossing (Person & Vehicle Classification)

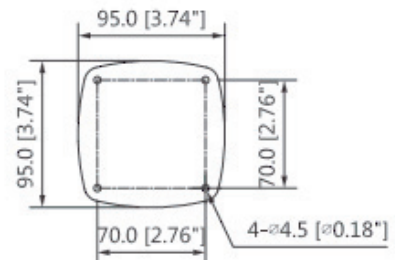
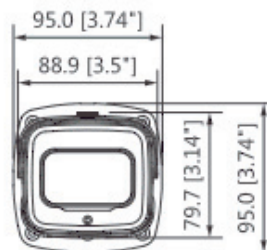
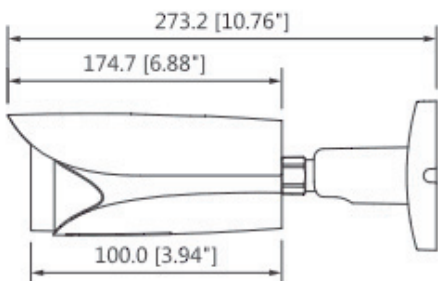
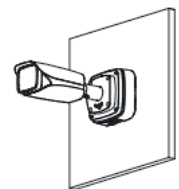
### Optional Brackets

Wall Mount Bracket included



BRACK-BB-53  
Junction Back Box

### Junction Back Box BRACK-BB-53



| Model                          |   | MPIX-50BIMRAI |            |            |           |
|--------------------------------|---|---------------|------------|------------|-----------|
| <b>Camera</b>                  |   |               |            |            |           |
| Image Sensor                   | 1/2.7" 5Megapixel progressive scan CMOS   |               |            |            |           |
| Effective Pixels               | 2592 (H) × 1944 (V)   |               |            |            |           |
| RAM/ROM                        | 1 GB / 128 MB   |               |            |            |           |
| Min. Illumination              | 0.005 Lux@F1.5  |               |            |            |           |
| Electronic Shutter Speed       | Auto/Manual, 1/3 s–1/100000   |               |            |            |           |
| S/N Ratio                      | > 56 dB   |               |            |            |           |
| Scanning System                | Progressive   |               |            |            |           |
| IR Distance                    | Up to 50m (164ft)   |               |            |            |           |
| IR On/Off Control              | Auto / Manual   |               |            |            |           |
| IR LEDs                        | 4   |               |            |            |           |
| <b>Lens</b>                    |   |               |            |            |           |
| Lens Type                      | Motorized vari-focal  |               |            |            |           |
| Focal Length                   | 2.7mm–13.5mm motorized lens   |               |            |            |           |
| Max. Aperture                  | F1.5  |               |            |            |           |
| Angle of View                  | H: 100°–28°, V: 72°–21° (2592 × 1944)<br>H: 104°–29°, V: 55°–16° (2688 × 1520)  |               |            |            |           |
| Mount Type                     | Board-in Type   |               |            |            |           |
| Aperture Type                  | Auto  |               |            |            |           |
| Close Focus Distance           | 0.8m (2.62ft)   |               |            |            |           |
| <b>Artificial Intelligence</b> |   |               |            |            |           |
| Face Detection                 | Face detection; track; optimization; snapshot; report high quality picture; face enhancement; face exposure; face attribute extract, 6 attributes and 8 expressions: Gender, age, glasses, expressions (anger, calm, happiness, sadness, disgust, surprise, confusion and fear), mask, beard; face matting setting: face, single inch photo;three snapshot methods: real-time snapshot, optimization snapshot, quality priority; face angle filter; optimization time setting |               |            |            |           |
| Fenced Area Protection         | Line Crossing; intrusion; fast moving (the three functions support the classification and accurate detection of vehicle and human); loitering detection; people gathering; parking detection  |               |            |            |           |
| People Counting                | Supports the counting of enter number, leave number, and pass number, and displaying and outputting yearly/monthly/daily reports.<br>Supports the counting of number in area, and 4 rules configuration. Count number of people or stay time and link alarm.<br>Supports queue management, and 4 rules configuration. Count number of people or stay time and link alarm  |               |            |            |           |
| <b>General Intelligence</b>    |   |               |            |            |           |
| Event Trigger                  | Motion detection, Video tampering, Scene changing, Network disconnection, IP address conflict, Illegal Access, Storage anomaly  |               |            |            |           |
| General Intelligence           | Object Abandoned/Missing  |               |            |            |           |
| Heat Map                       | Yes   |               |            |            |           |
| DORI Distance                  | Lens  | Detect        | Observe    | Recognize  | Identify  |
|                                | W   | 64m(210ft)    | 26m(85ft)  | 13m(43ft)  | 6m(20ft)  |
|                                | T   | 212m(696ft)   | 85m(279ft) | 42m(138ft) | 21m(69ft) |

| Video                |   |
|----------------------|---|
| Compression          | H.265,H.264,H.264B,H.264H, MJPEG (only supported by sub stream)   |
| Smart Codec          | Smart H.265+/ Smart H.264   |
| Streaming Capability | 3 Streams   |
| Resolution           | 2592 × 1944/2688 × 1520/2560 × 1440/2304 × 1296/1080P (1920 × 1080)/1.3M (1280 × 960)/ 720P(1280 × 720)/D1 (704 × 576/704 × 480)/ VGA (640 × 480)/CIF (352 × 288/352 × 240)   |
| Frame Rate           | <b>Main Stream:</b> 2592 × 1944 (1 fps–20 fps)<br>2560 × 1440 (1 fps–25/30 fps)<br>1920 × 1080 (1 fps–50/60 fps)<br><b>Sub Stream:</b> D1 (1 fps–20/30 fps)<br>D1 (1 fps–50 fps)<br><b>Third Stream:</b> 1080P (1 fps–17 fps)   |
| Bit Rate Control     | CBR/VBR   |
| Bit Rate             | H.264: 32 Kbps–8192 Kbps<br>H.265: 19 Kbps–8192 Kbps  |
| Day/Night            | Auto(ICR)/Color/B/W   |
| BLC Mode             | BLC/HLC/WDR (120 dB)  |
| White Balance        | Auto/Natural/Street Lamp/Outdoor/Manual   |
| Gain Control         | Auto/Manual   |
| Noise Reduction      | 3D DNR  |
| Motion Detection     | Off/On (4 Zone, Rectangle)  |
| Region of Interest   | Off/On (4 Zone)   |
| EIS                  | Yes   |
| Smart Illumination   | Yes   |
| Defog                | Yes   |
| Flip                 | 0°/90°/180°/270°  |
| Mirror               | Off/On  |
| Privacy Masking      | Off/On (4 Area, Rectangle)  |
| <b>Audio</b>         |   |
| Audio Compression    | G.711a, G.711Mu, AAC, G.726, G.723  |
| <b>Alarm</b>         |   |
| Alarm Event          | No SD card; SD card full; SD card error; network disconnection; IP conflict;illegal access; motion detection; video tampering; Defocus Detection; scene changing; intrusion; line crossing, abandoned object; missing object; fast moving; parking detection; loitering detection; people gathering; audio detection; people counting; face detection; voltage detection; People counting in area; Stay alarm; People No. exception detection; Queue Management |
| <b>Network</b>       |   |
| Network              | RJ-45 (10/100 Base-T)   |
| SDK and API          | Yes   |
| Protocol             | IPv4; IPv6; HTTP; HTTPS; TCP; UDP; ARP; RTP; RTSP; RTCP; RTMP; SMTP; FTP; SFTP; DHCP; DNS; DDNS; QoS; UPnP; NTP; Multicast; ICMP; I GMP; NFS; PPPoE; 802.1x; SNMP   |
| Interoperability     | ONVIF (Profile S/Profile G/Profile T), CGI, P2P   |
| User/Host            | 20 Users  |
| Storage              | NAS; FTP; SFTP; WatchNET Cloud<br>Micro SD card 256 GB  |

|                      |   |
|----------------------|---|
| Browser              | IE (versions newer than IE8), Chrome, Firefox, Safari (versions newer than Safari 12) |
| Mobile Phone         | iOS, Android  |
| <b>Interface</b>     |   |
| Audio Interface      | 1/1 channel In/Out  |
| Alarm                | 2 channel In: 5mA 5V DC<br>1 channel Out: 300mA 12V DC                                |
| <b>Electrical</b>    |   |
| Power Supply         | DC 12V ( $\pm 30\%$ ), PoE (802.3af)  |
| Power Consumption    | <10.9W  |
| <b>Environmental</b> |   |
| Operating Conditions | -30°C ~ +60°C (-22°F ~ +140°F)<br>Less than 95%RH                                     |
| Storage Conditions   | -40°C to +60°C (-40°F to +140°F)  |
| Ingress protection   | IP67  |
| <b>Construction</b>  |   |
| Casing               | Metal, plastic  |
| Dimensions           | 273.2 mm × 95.0 mm × 95.0 mm<br>(10.76" × 3.74" × 3.74")                              |
| Net Weight           | 1.11kg (2.44lb)   |
| Gross Weight         | 1.51kg (3.33lb)   |



*\* All product names, logos and brands are property of their respective owners. All company products and service names used on this box/website/brochure are for identification purposes only. Use of these names, logos and brands does not imply endorsement. 2021 WatchNET Inc. © All Rights Reserved. All product specifications are subject to change without notice.*

**CANADA:**  
351 Ferrier Street, Unit 5  
Markham, ON L3R 5Z2  
Toll Free: 1-866-843-6865  
Tel: 416-410-6865

**USA:**  
171 Cooper Ave. Suite 110  
Tonawanda, NY 14150 USA  
Toll Free: 1-866-843-6865  
Local: 1-716-877-7277

**UAE:**  
PO Box 126312  
No 703, Oxford Towers  
Business Bay, Dubai, UAE  
Tel: +971 4 2767117

Sept. 13, 2021  
[info@watchnetinc.com](mailto:info@watchnetinc.com)  
[www.watchnetinc.com](http://www.watchnetinc.com)